



Exclusively for over 55s

“I love my house but looking after the garden is getting harder every year.”

Maintaining a large property can be a real burden, especially if you're on your own. Your home or garden may just be too large to look after, or perhaps there are too many stairs.

We have a number of properties offering independence, low maintenance, increased security and a ready made community with scheme manager support. Properties are available to anyone over 60 or those over 55 with a medical need. Thoughtful features are built in to enable you to live as independently as you like, either socialising with others or enjoying peace and quiet behind your own front door. All properties benefit from our 24 hour call centre support.



■ In Barlestone, **St Giles Close** offers a mix of one and two bedroom properties, including seven apartments and 19 bungalows, arranged around a small green.

■ In Burbage, **Castle Court** has 18 one bedroom apartments and 16 studio apartments with attractive communal lounge, patio and gardens.



■ **Herford Way**, Burbage offers 52 individual bungalows and a community centre arranged in communal grounds.

- In Earl Shilton and Barwell, **Tom Eatough Court** offers twenty-four ground floor apartments with individual patios. **Meadow Road** offers 28 bungalows arranged in communal grounds.



Tom Eatough Court



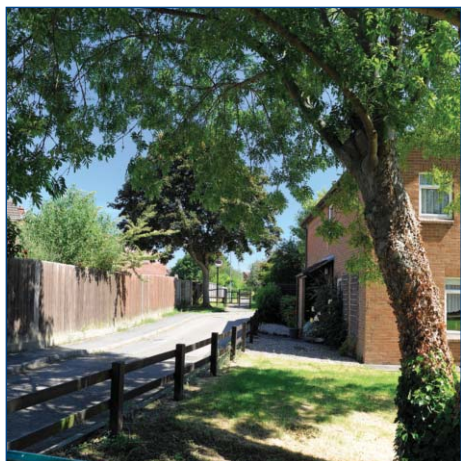
Meadow Road



- In Hinckley, **Royal Court** is just a short walk to the town centre offering 20 one and two bedroom apartments, 12 studio apartments, three bungalows and a community room.



- **Armada Court** in Hinckley is our largest scheme but has a close community feel. It offers 51 one bedroom and 19 two bedroom apartments with two communal lounges.



- In Ratby, **Centurion Court** offers 21 studio and four one bed apartments with a communal lounge in a peaceful village setting (available now!).

- In Markfield, **Mayflower Close** offers 20 studio apartments, six bungalows and four 1 bedroom apartments in attractive communal grounds.

For further information and application details contact the Housing Options Team - Housing Registration on 01455 238141 or email: housing@hinckley-bosworth.gov.uk

✳ If you are downsizing from a larger HBBC property you will be given high priority for any of the properties listed.