

**Hinckley & Bosworth Borough
Council**

**Hinckley & Bosworth
Borough Phase 1
Habitat Study of Proposed
Allocation Sites**


Final report

Prepared by LUC
May 2020

Part 2: Drawings (figure 2.10 to figure 3)

Hinckley & Bosworth
Phase 1 Habitat survey

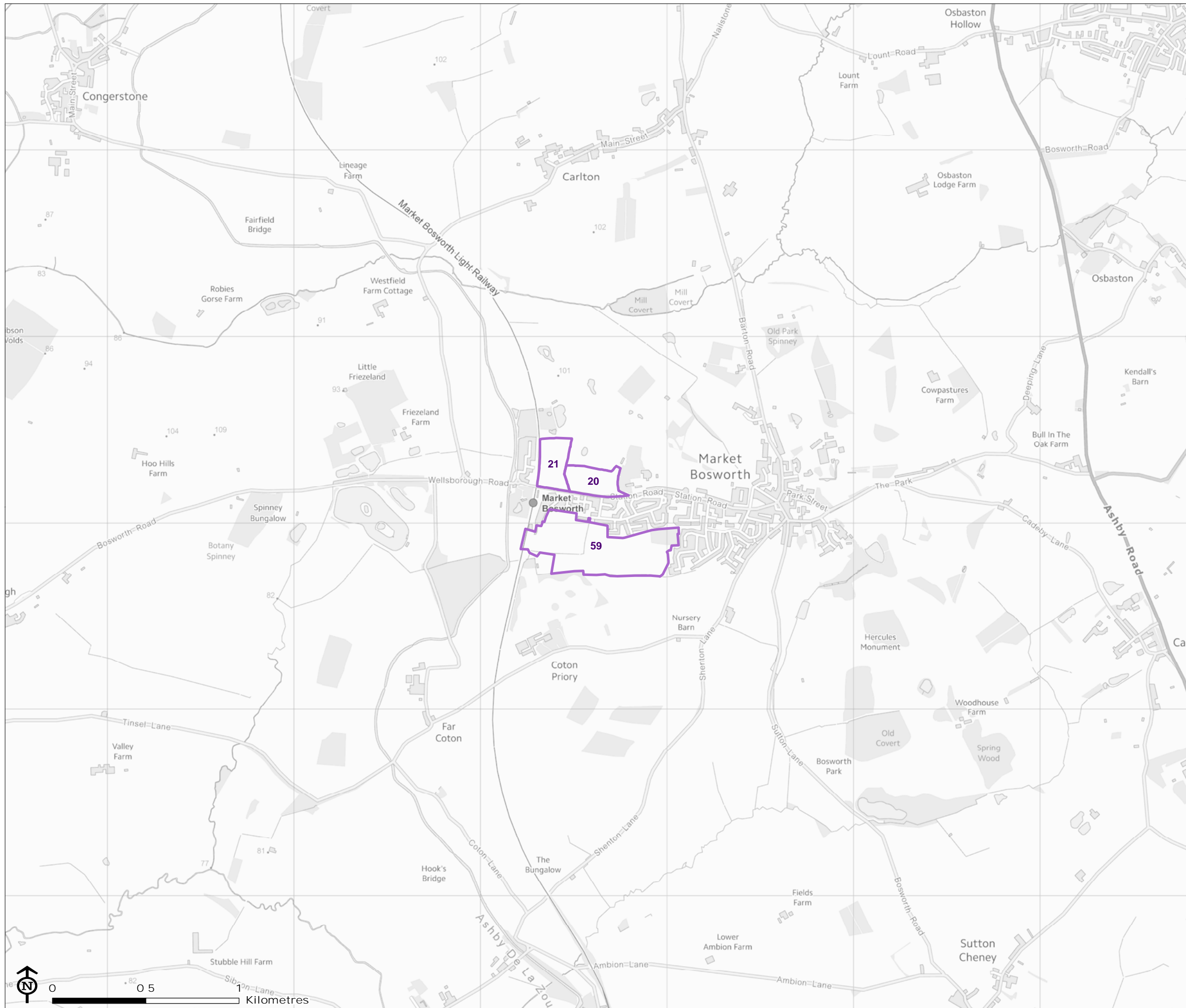
Figure 2.10: Market Bosworth
Assessment Sites

 Assessment site

Corresponding LUC ID and Council ID

20: AS392 59: LPR9

21: AS1050




Map Scale @A3: 1:20,000



Hinckley & Bosworth
Phase 1 Habitat survey

Figure 2.11: Barlestone Assessment Sites

 Assessment site

Corresponding LUC ID and Council ID

6: AS455 44: LPR72

43: AS53




Map Scale @A3: 1:20,000

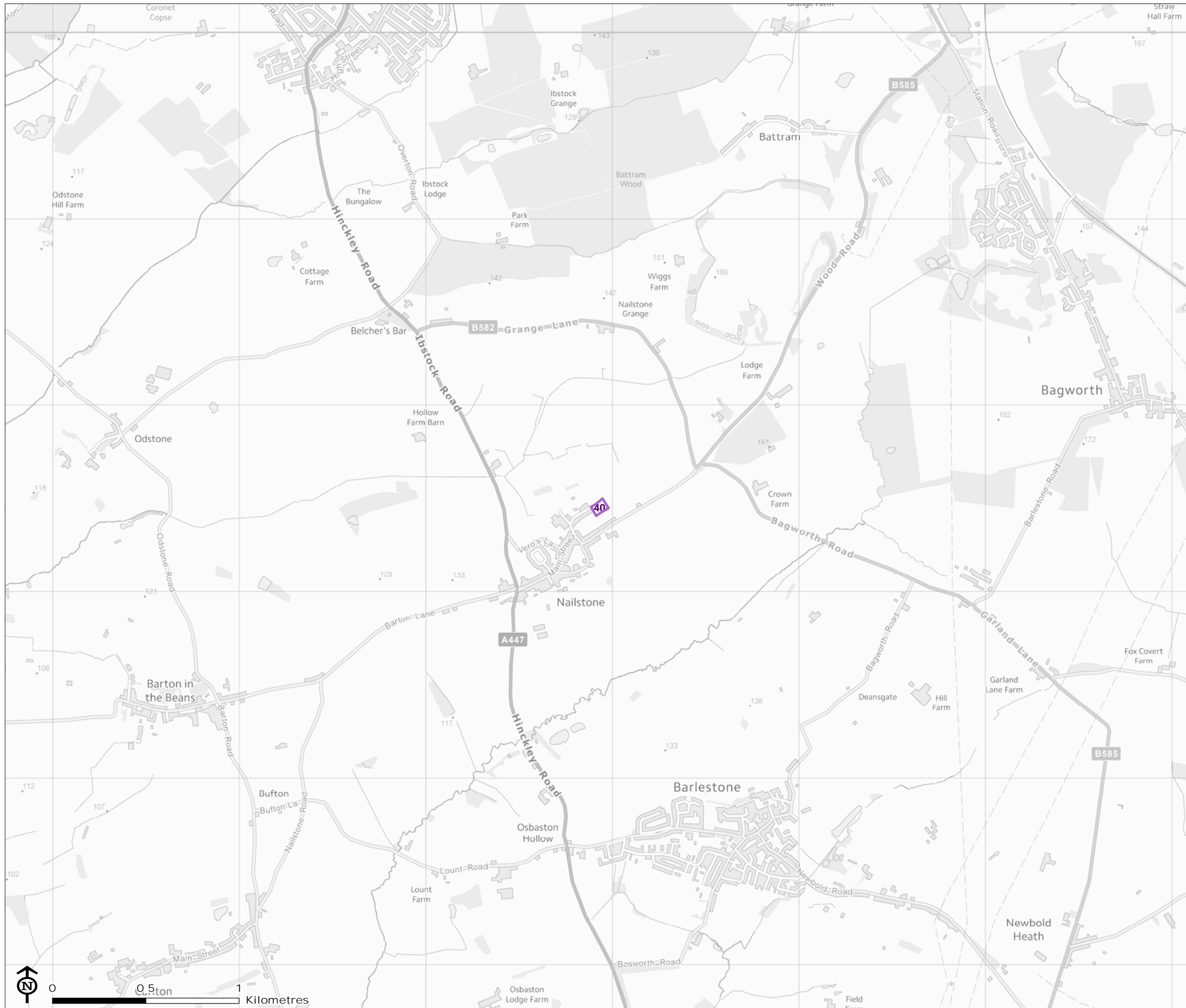


Hinckley & Bosworth
Phase 1 Habitat survey

Figure 2.12: Nailstone Assessment Sites

 Assessment site


Corresponding LUC ID and Council ID
40: AS1030



Map Scale @A3: 1:20,000

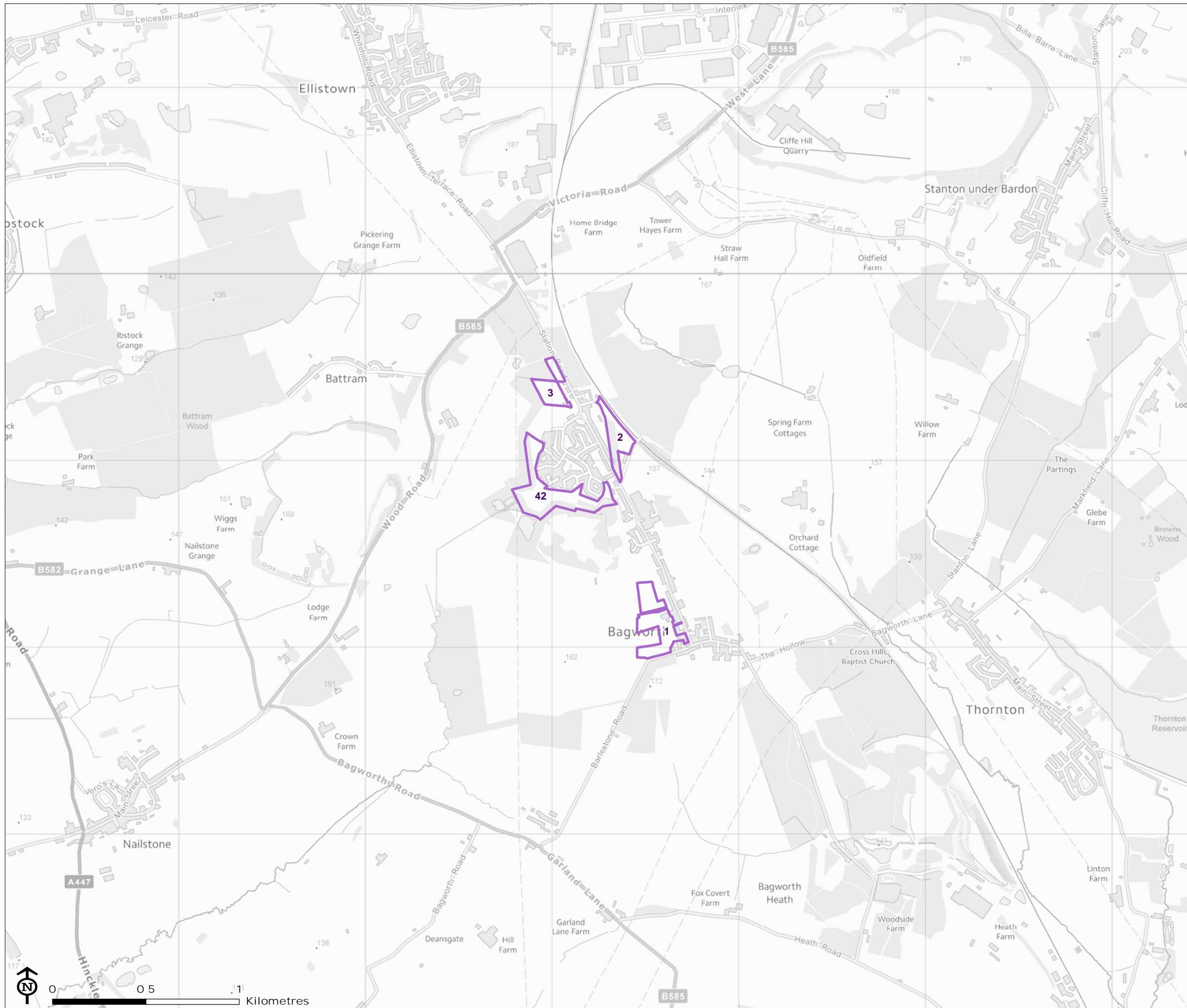


Figure 2.13: Bagworth Assessment Sites

 Assessment site

Corresponding LUC ID and Council ID

- | | |
|---------|--------------|
| 1: AS5 | 3: AS16/1027 |
| 2: AS12 | 42: LPR71 |



Map Scale @A3: 1:20,000



Hinckley & Bosworth
Phase 1 Habitat survey

Figure 2.14: Thornton Assessment Sites

Assessment site

Corresponding LUC ID and Council ID

4: AS32 18: AS686

11: AS33




Map Scale @A3: 1:20,000



Hinckley & Bosworth
Phase 1 Habitat survey

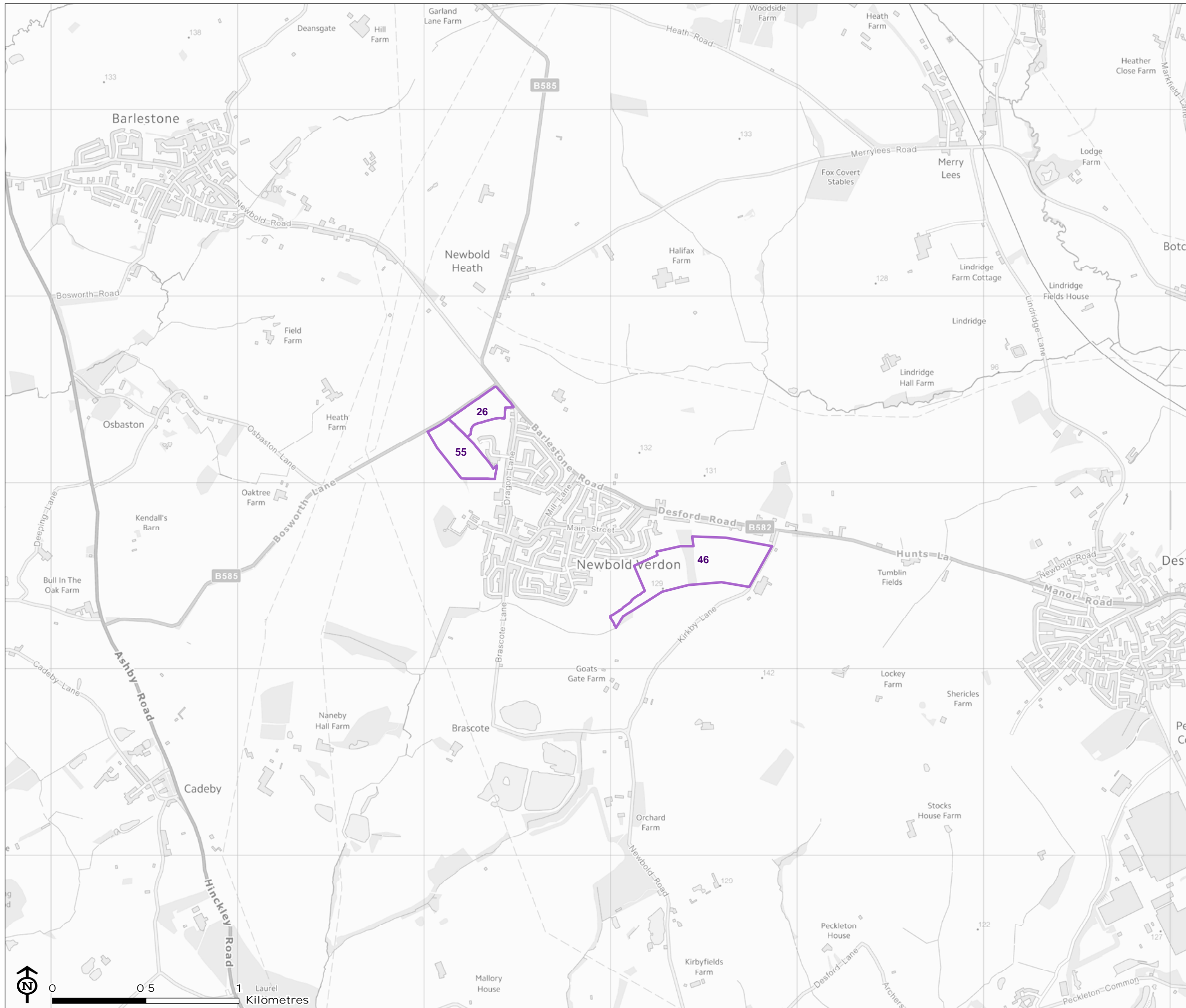
Figure 2.15: Newbold Verdon
Assessment Sites

 Assessment site

Corresponding LUC ID and Council ID

26: LPR29 55: LPR100

46: AS445




Map Scale @A3: 1:20,000



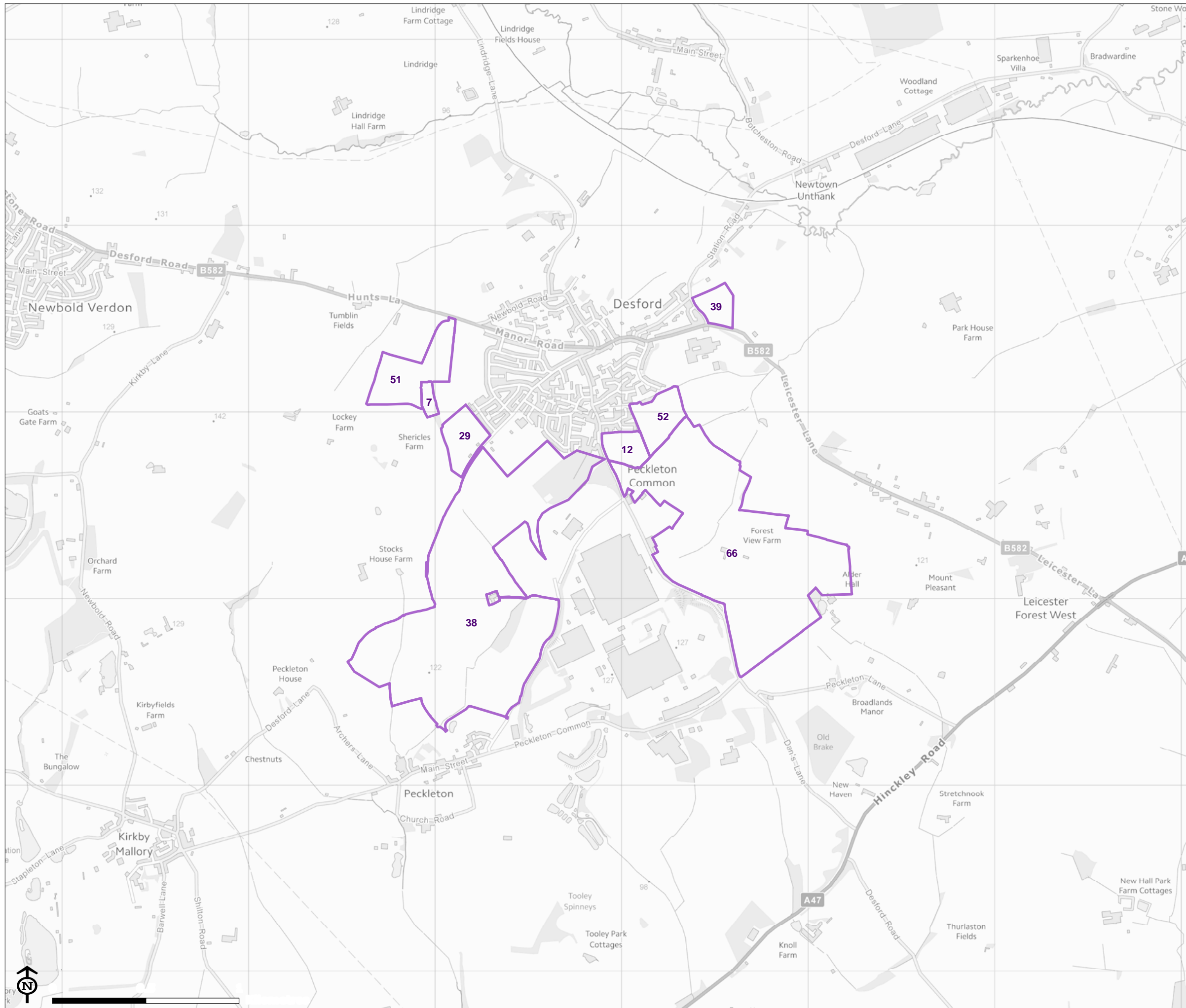
Hinckley & Bosworth Phase 1 Habitat survey

Figure 2.16: Desford and Peckleton Assessment Sites

 Assessment site

Corresponding LUC ID and Council ID

- | | |
|-----------|------------|
| 7: AS466 | 39: LPR37 |
| 12: AS201 | 51: LPR83 |
| 29: LPR35 | 52: LPR119 |
| 38: LPR24 | 66: AS200 |




Map Scale @A3: 1:20,000



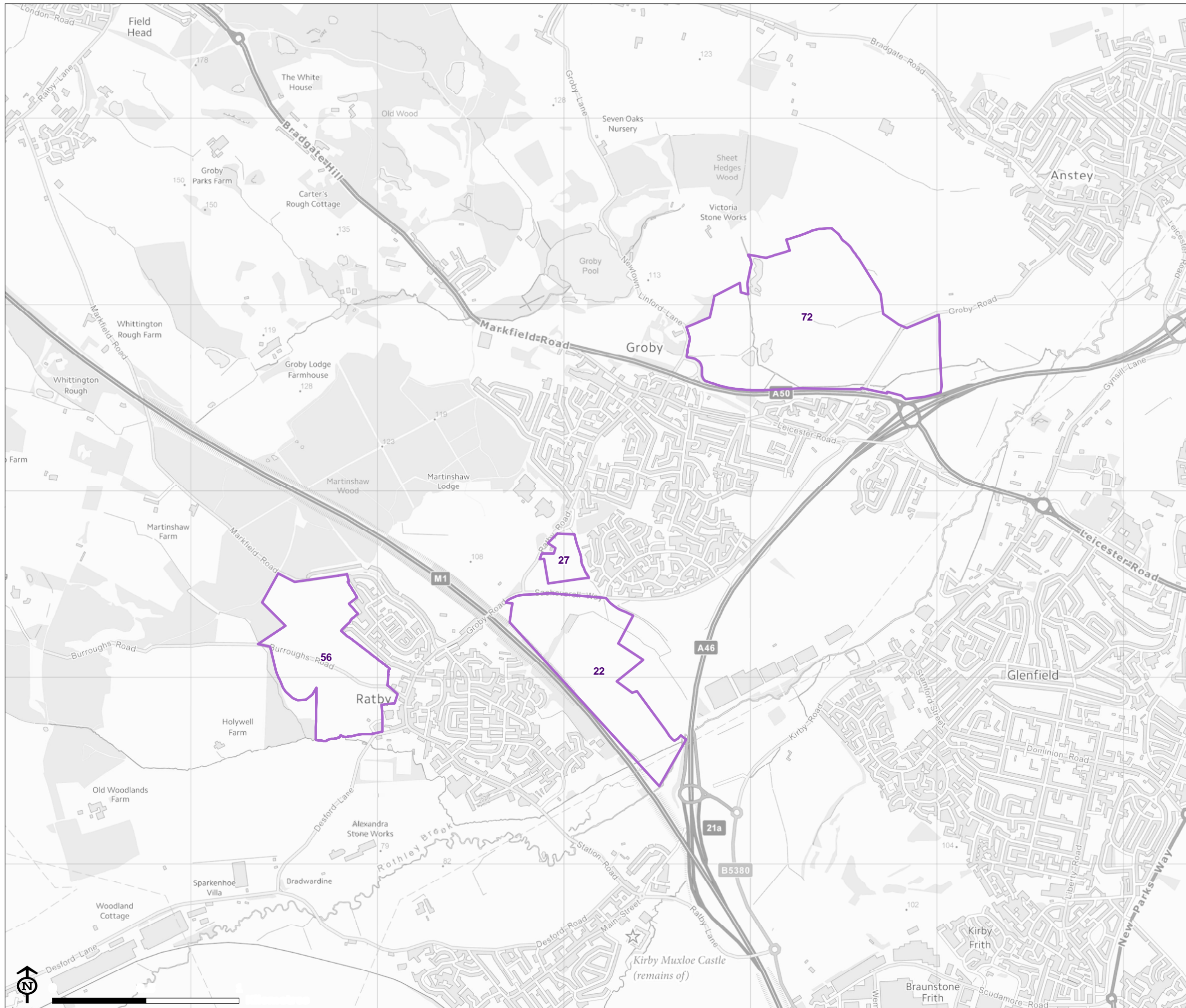
Hinckley & Bosworth
Phase 1 Habitat survey

Figure 2.17: Groby and Ratby Assessment Sites

 Assessment site

Corresponding LUC ID and Council ID

22: AS1008	56: LPR107
27: LPR30	72: Various




Map Scale @A3: 1:20,000



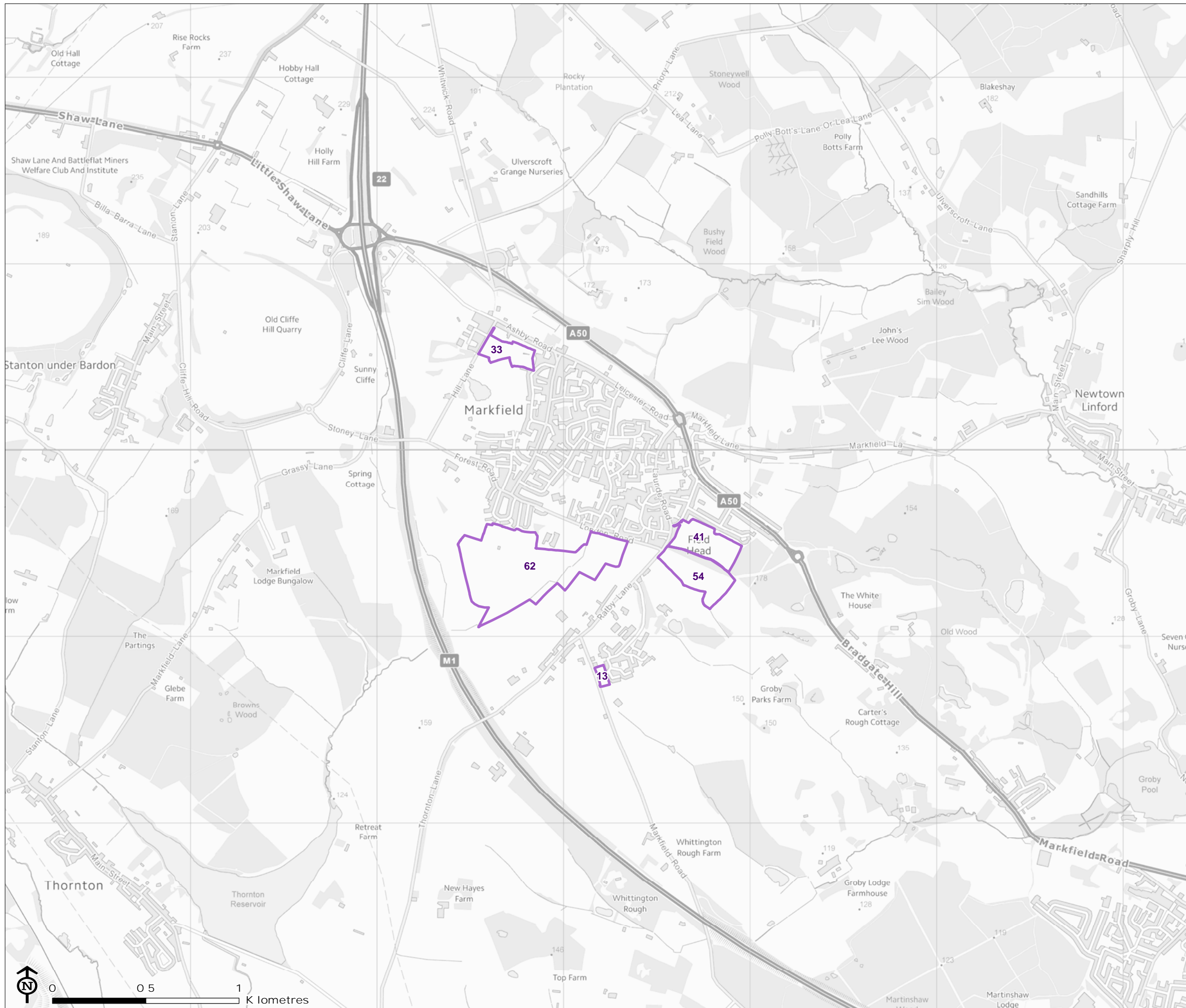
Hinckley & Bosworth
Phase 1 Habitat survey

Figure 2.18: Markfield Assessment Sites

 Assessment site

Corresponding LUC ID and Council ID

- | | |
|-----------|-----------|
| 13: AS407 | 54: LPR96 |
| 33: LPR43 | 62: LPR94 |
| 41: LPR70 | |



Map Scale @A3: 1:20,000



Hinckley & Bosworth
Phase 1 Habitat survey

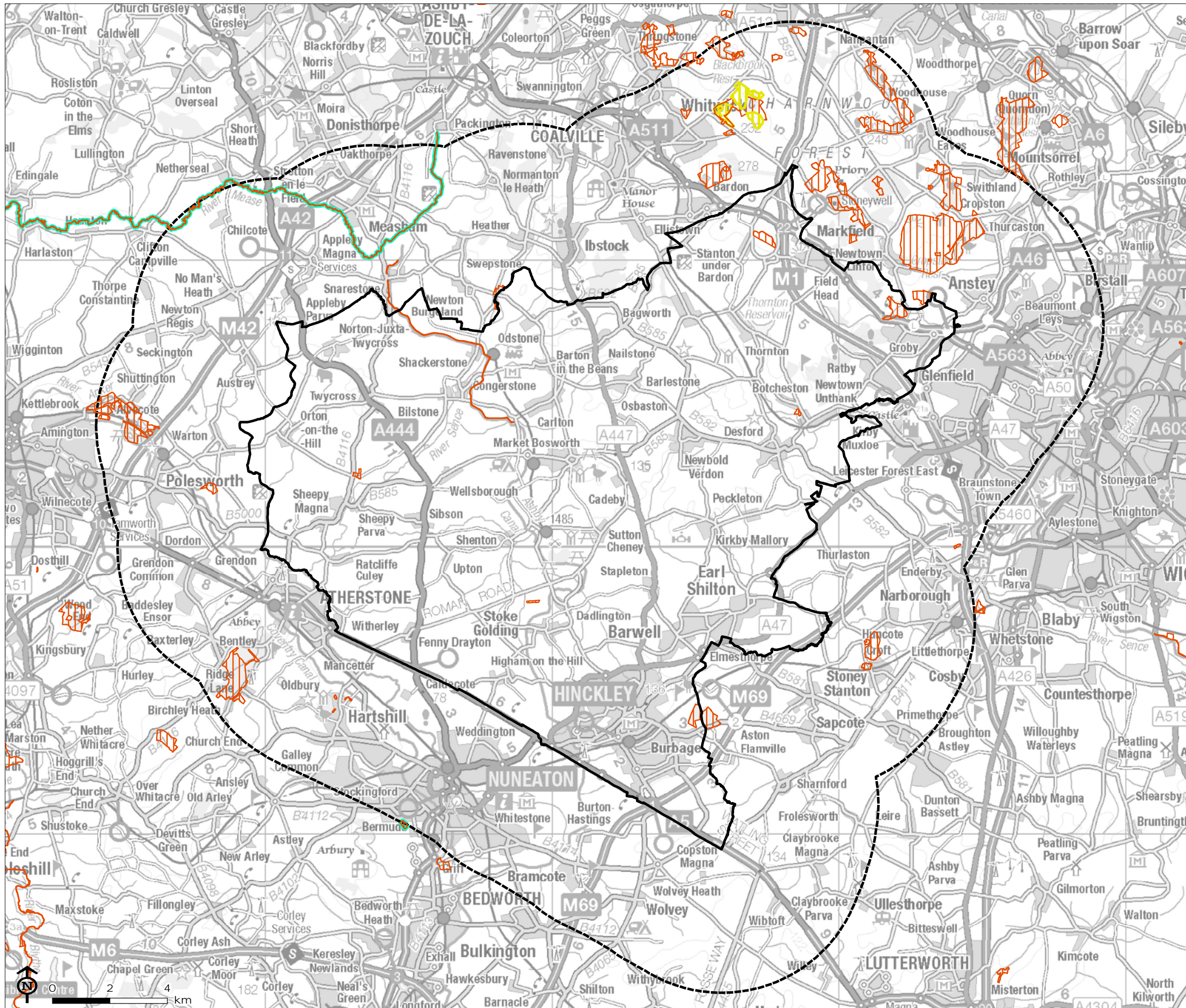







Figure 3: International and National Designated for Nature Conservation within 5km

-  Hinckley and Bosworth
-  Hinckley and Bosworth 5km buffer
-  Special Area of Conservation
-  Site of Special Scientific Interest
-  National Nature Reserve

Map Scale @A3: 1:130,000

