

**Hinckley & Bosworth Borough
Council**

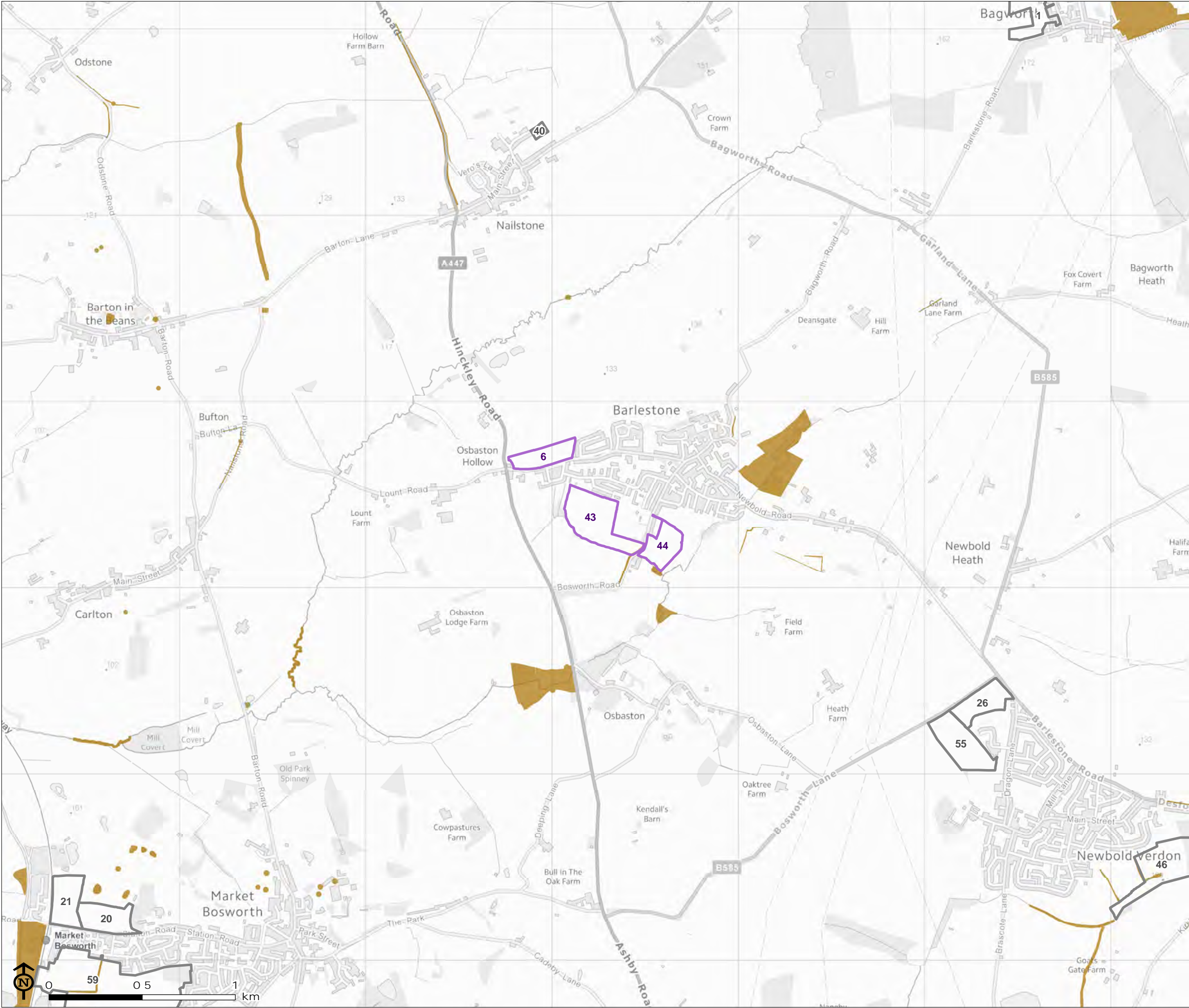
**Hinckley & Bosworth
Borough Phase 1**
**Habitat Study of Proposed
Allocation Sites**

Final report

Prepared by LUC

May 2020

Part 4: Drawings (figure 5.11 to figure
6.02)



Hinckley & Bosworth
Phase 1 Habitat survey

Figure 5.11: Barlestone Statutory and Non Statutory Sites Designated for Nature Conservation Illustrated with Assessment Sites

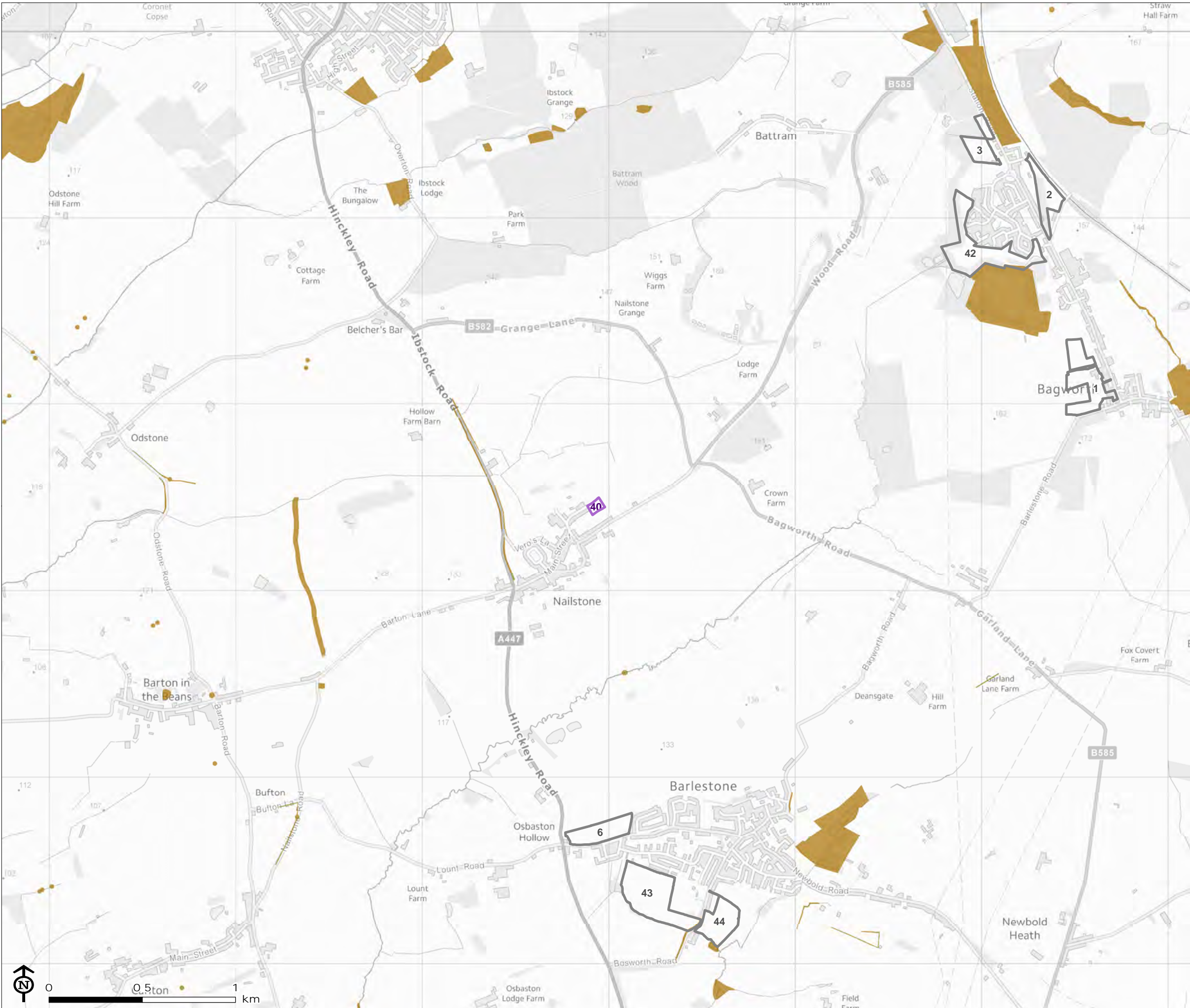
- Assessment site
- Local Wildlife Site

Corresponding LUC ID and Council ID

6: AS455	44: LPR72
43: AS53	

Map Scale @A3: 1:20,000





Hinckley & Bosworth
Phase 1 Habitat survey

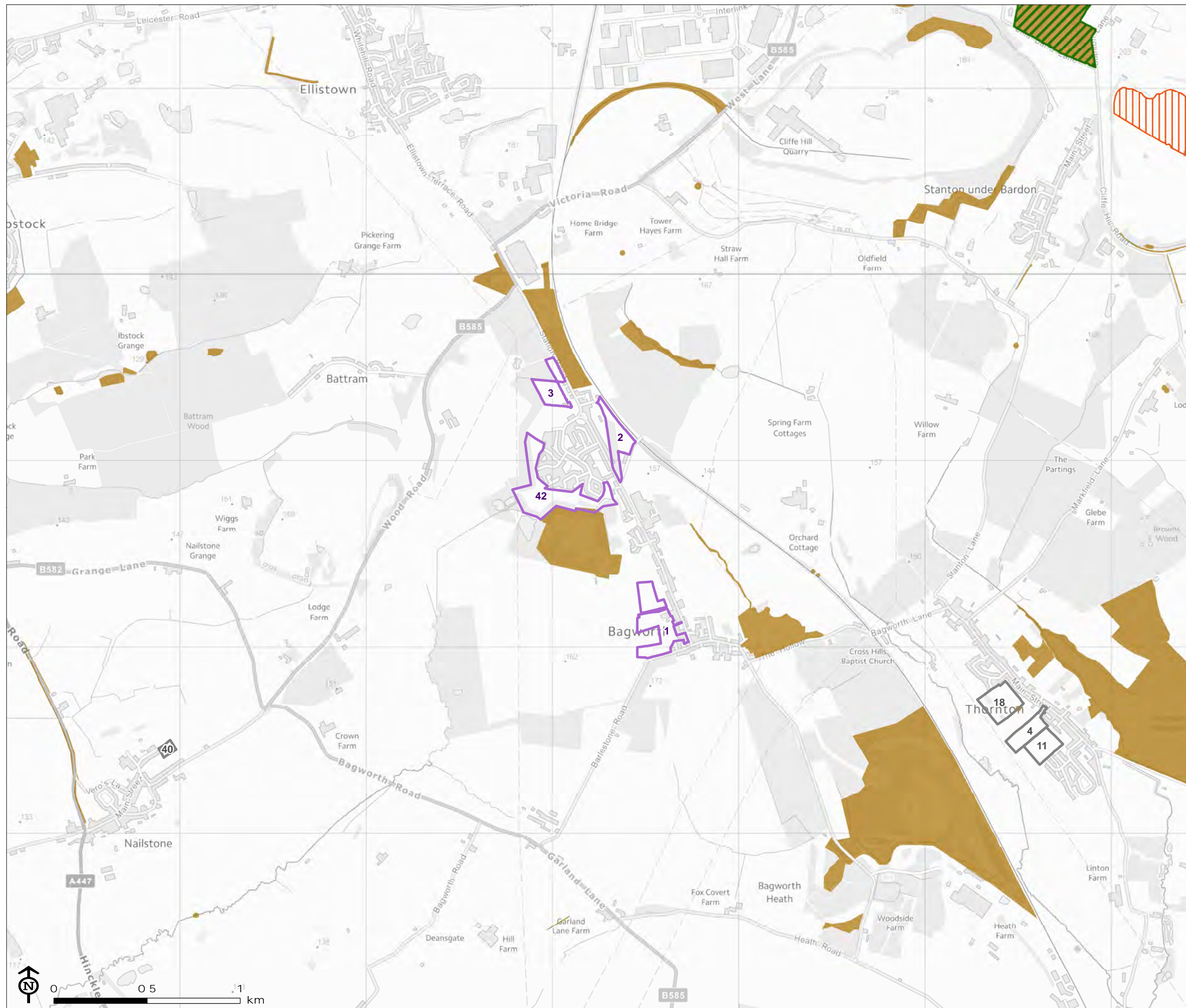
Figure 5.12: Nailstone Statutory and Non Statutory Sites Designated for Nature Conservation Illustrated with Assessment Sites

- Assessment site
- Local Wildlife Site

Corresponding LUC ID and Council ID
40: AS1030

Map Scale @A3: 1:20,000





Hinckley & Bosworth Phase 1 Habitat survey

Figure 5.13: Bagworth Statutory and Non Statutory Sites Designated for Nature Conservation Illustrated with Assessment Sites

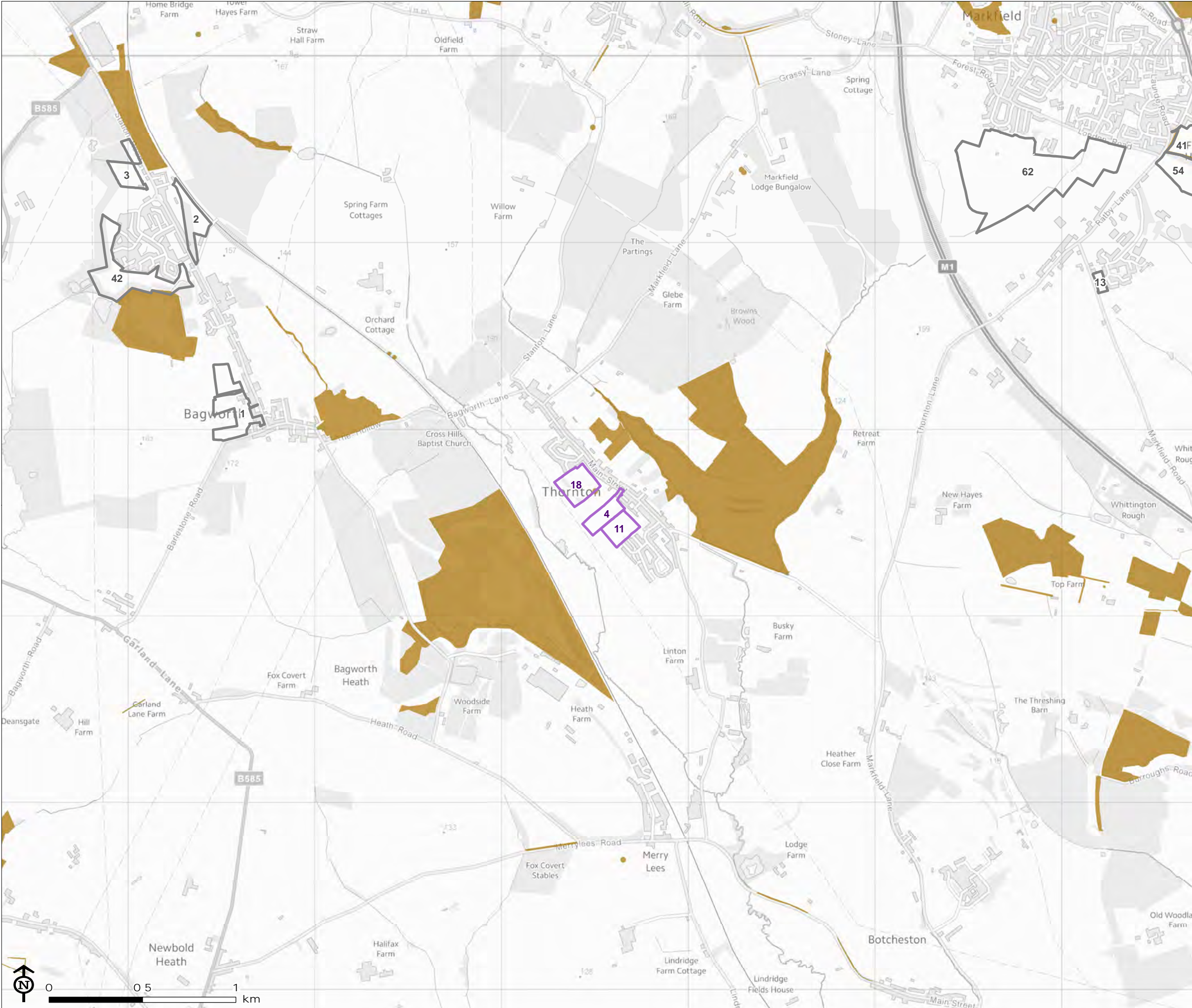
- Assessment site
- Site of Special Scientific Interest
- Local Nature Reserve
- Local Wildlife Site

Corresponding LUC ID and Council ID

2: AS12 42: LPR71
3: AS16/1027

Map Scale @A3: 1:20,000

LUC



Hinckley & Bosworth
Phase 1 Habitat survey

Figure 5.14: Thornton Statutory and Non Statutory Sites Designated for Nature Conservation Illustrated with Assessment Sites

- Assessment site
- Local Wildlife Site

Corresponding LUC ID and Council ID
4: AS32 18: AS686
11: AS33

Map Scale @A3: 1:20,000



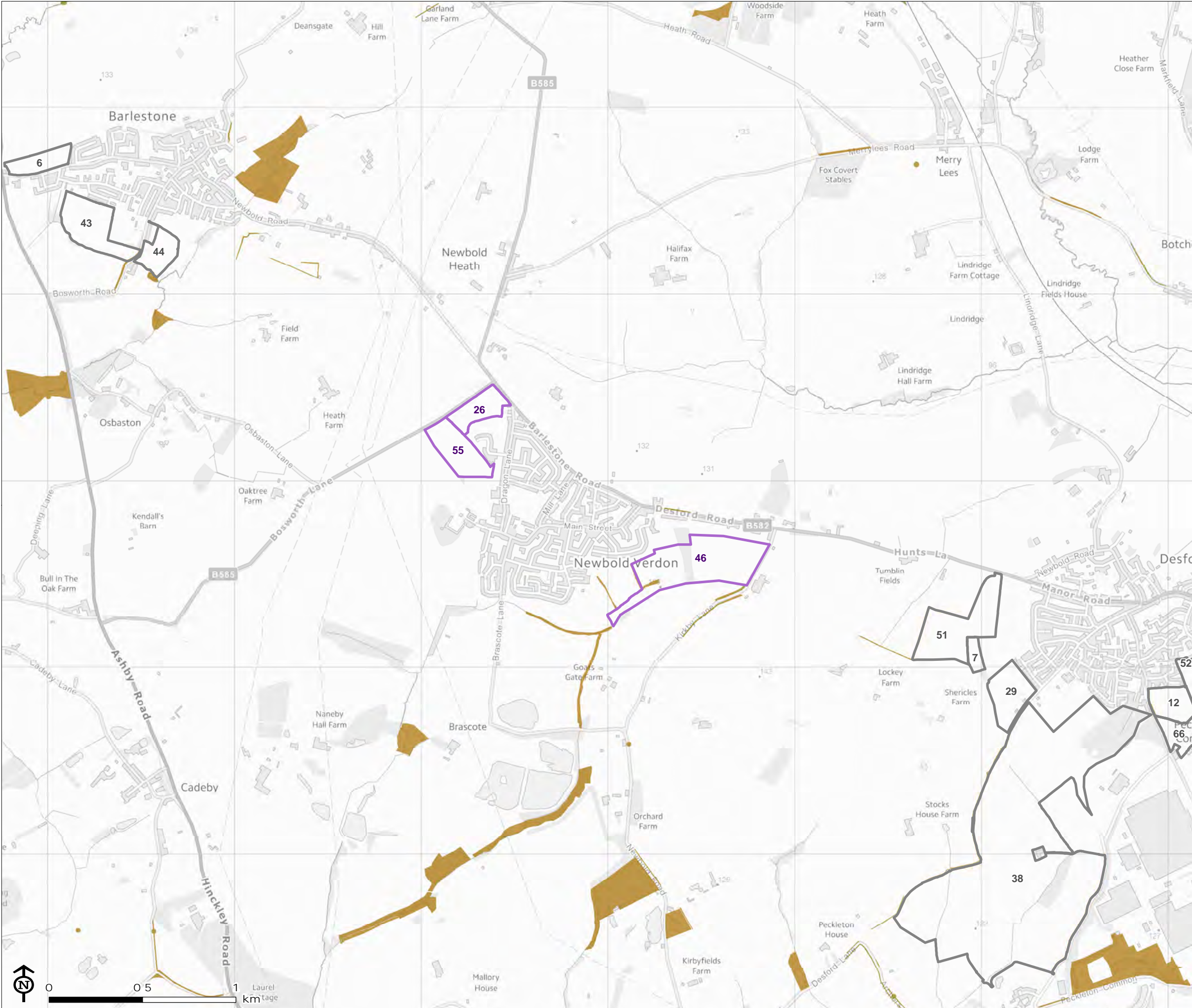
Hinckley & Bosworth Phase 1 Habitat survey

Figure 5.15: Newbold Verdon
Statutory and Non Statutory Sites
Designated for Nature Conservation
Illustrated with Assessment Sites

- Assessment site
- Local Wildlife Site

Corresponding LUC ID and Council ID

26: LPR29 55: LPR100
46: AS445



Map Scale @A3: 1:20,000



Hinckley & Bosworth
Phase 1 Habitat survey

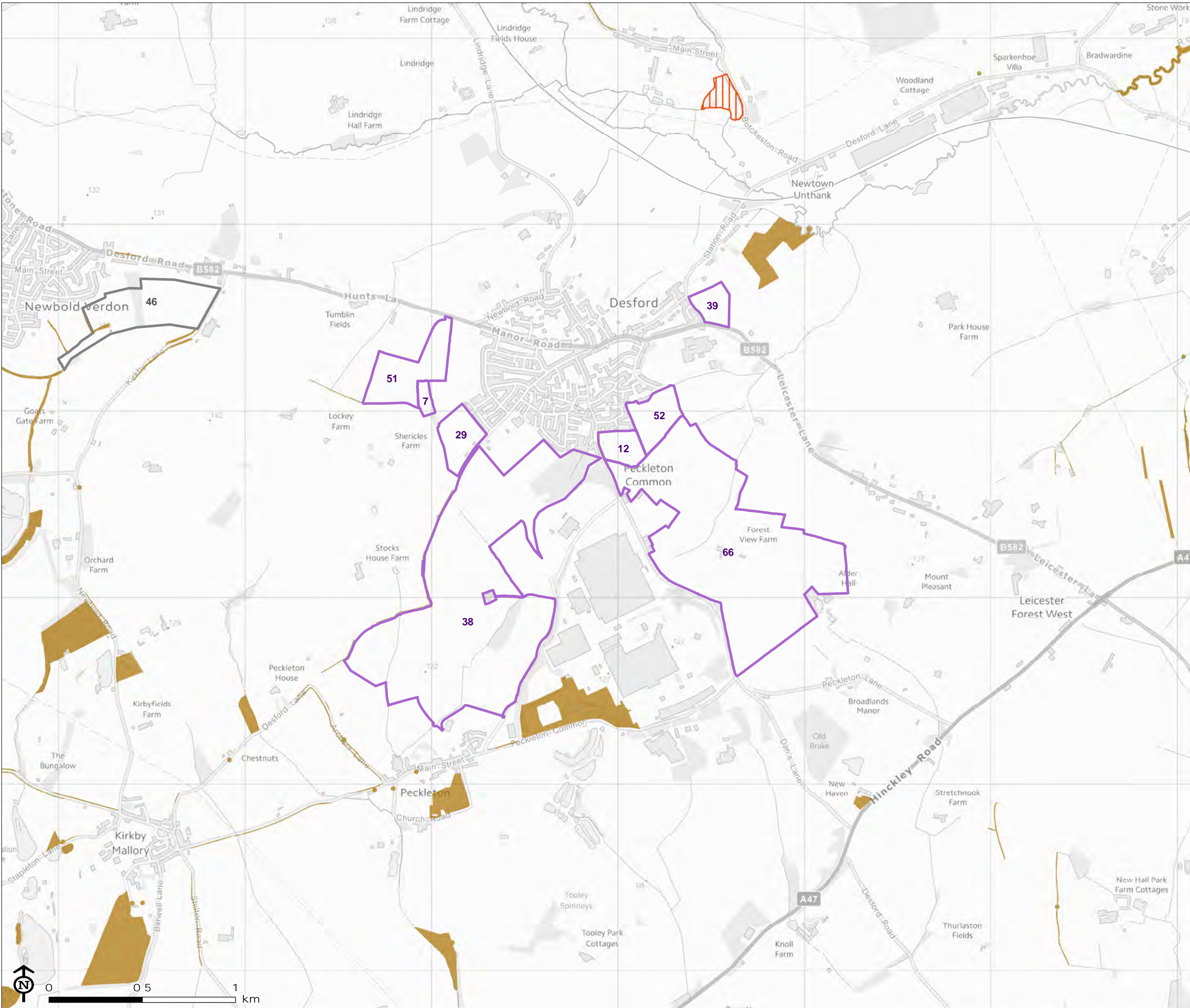
Figure 5.16: Desford and Peckleton
Statutory and Non Statutory Sites
Designated for Nature Conservation
Illustrated with Assessment Sites

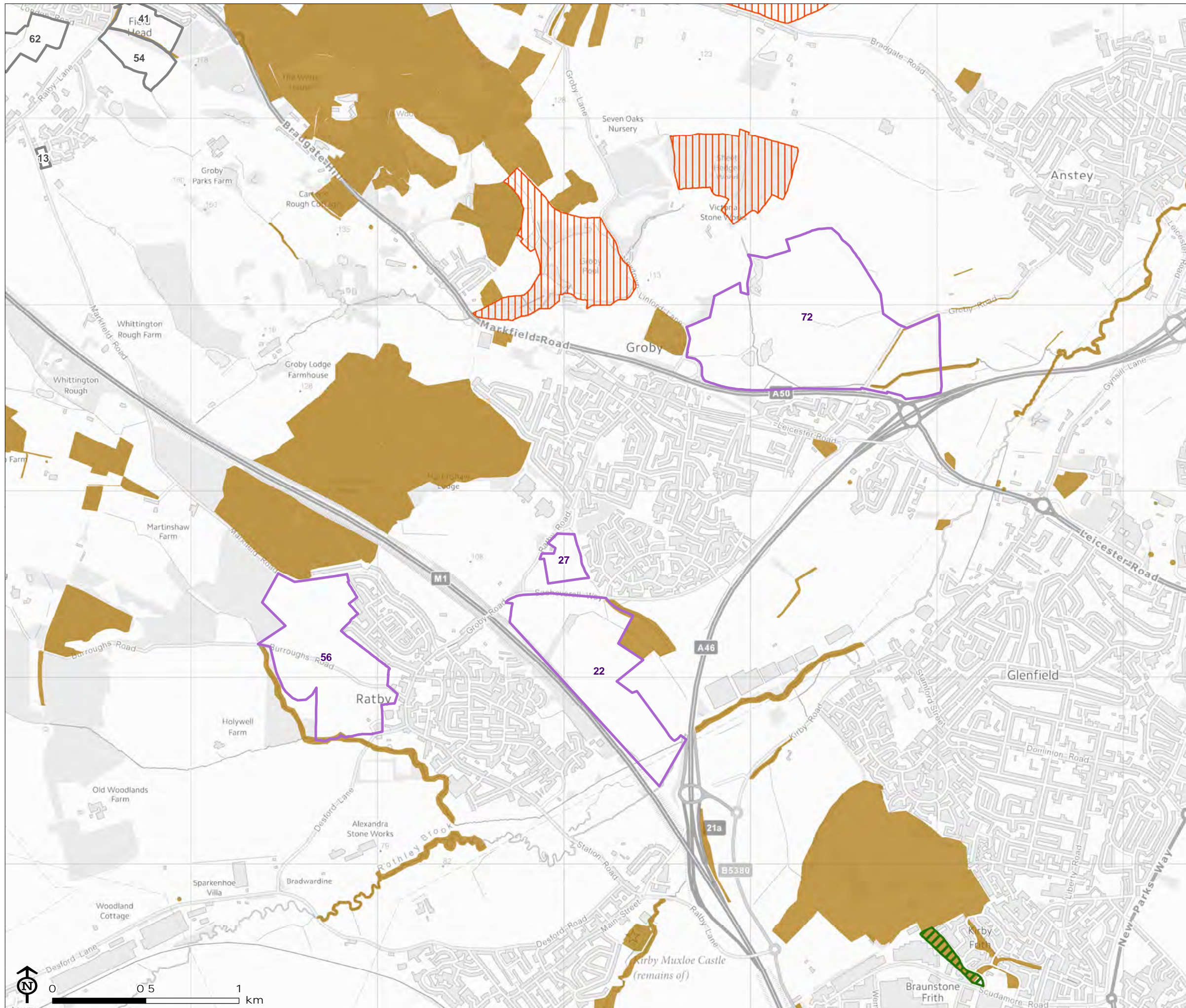
- Assessment site
- Site of Special Scientific Interest
- Local Wildlife Site

Corresponding LUC ID and Council ID

7: AS466	39: LPR37
12: AS201	51: LPR83
29: LPR35	52: LPR119
38: LPR2	66: AS200

Map Scale @A3: 1:20,000





Hinckley & Bosworth Phase 1 Habitat survey

Figure 5.17: Groby and Ratby
Statutory and Non Statutory Sites
Designated for Nature Conservation
Illustrated with Assessment Sites

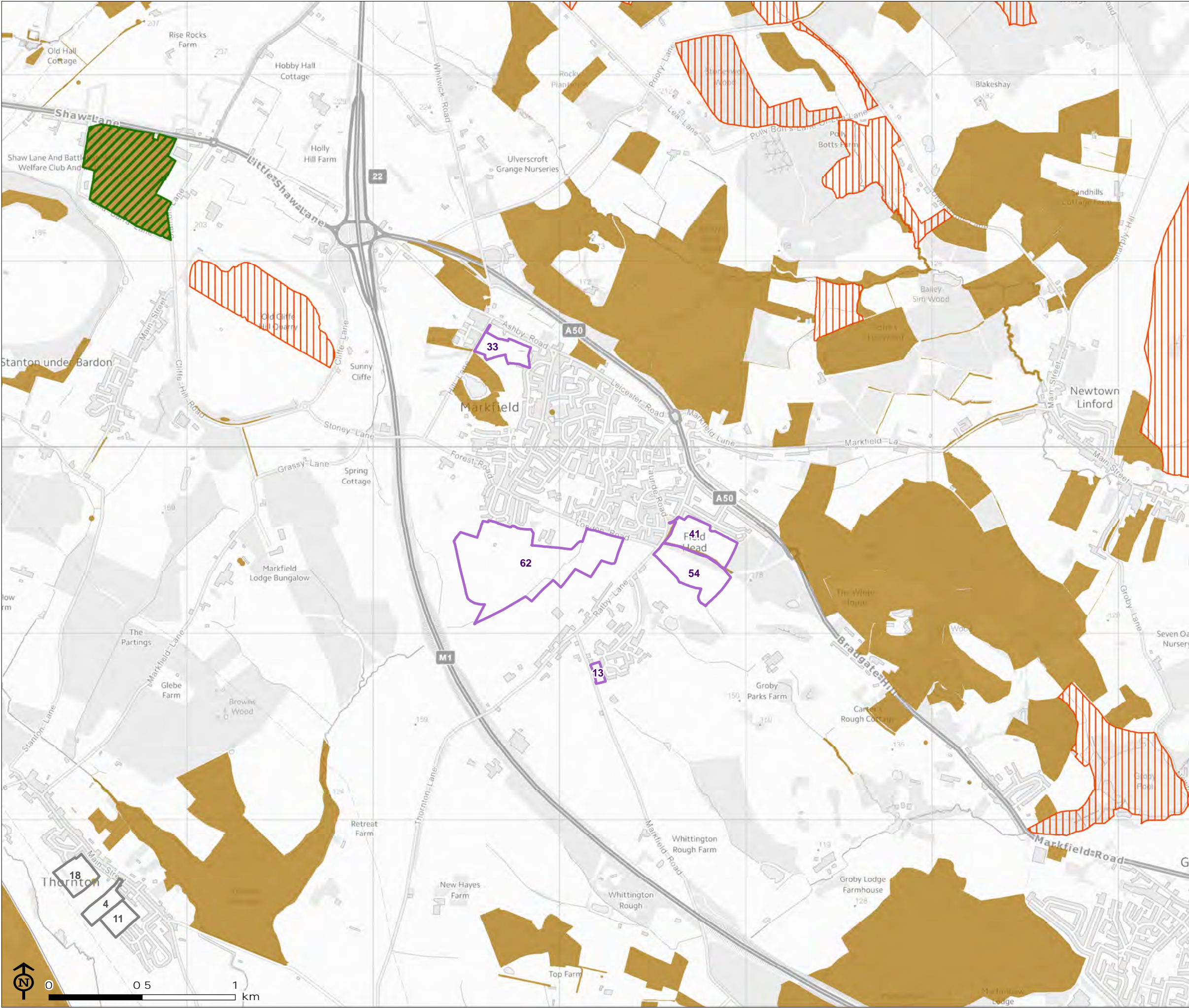
- Assessment site
- Site of Special Scientific Interest
- Local Nature Reserve
- Local Wildlife Site

Corresponding LUC ID and Council ID

22: AS1008	56: LPR107
27: LPR30	72: Various

Map Scale @A3: 1:20,000

LUC



Hinckley & Bosworth
Phase 1 Habitat survey

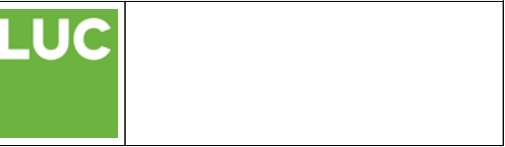
Figure 5.18: Markfield Statutory and Non Statutory Sites Designated for Nature Conservation Illustrated with Assessment Sites

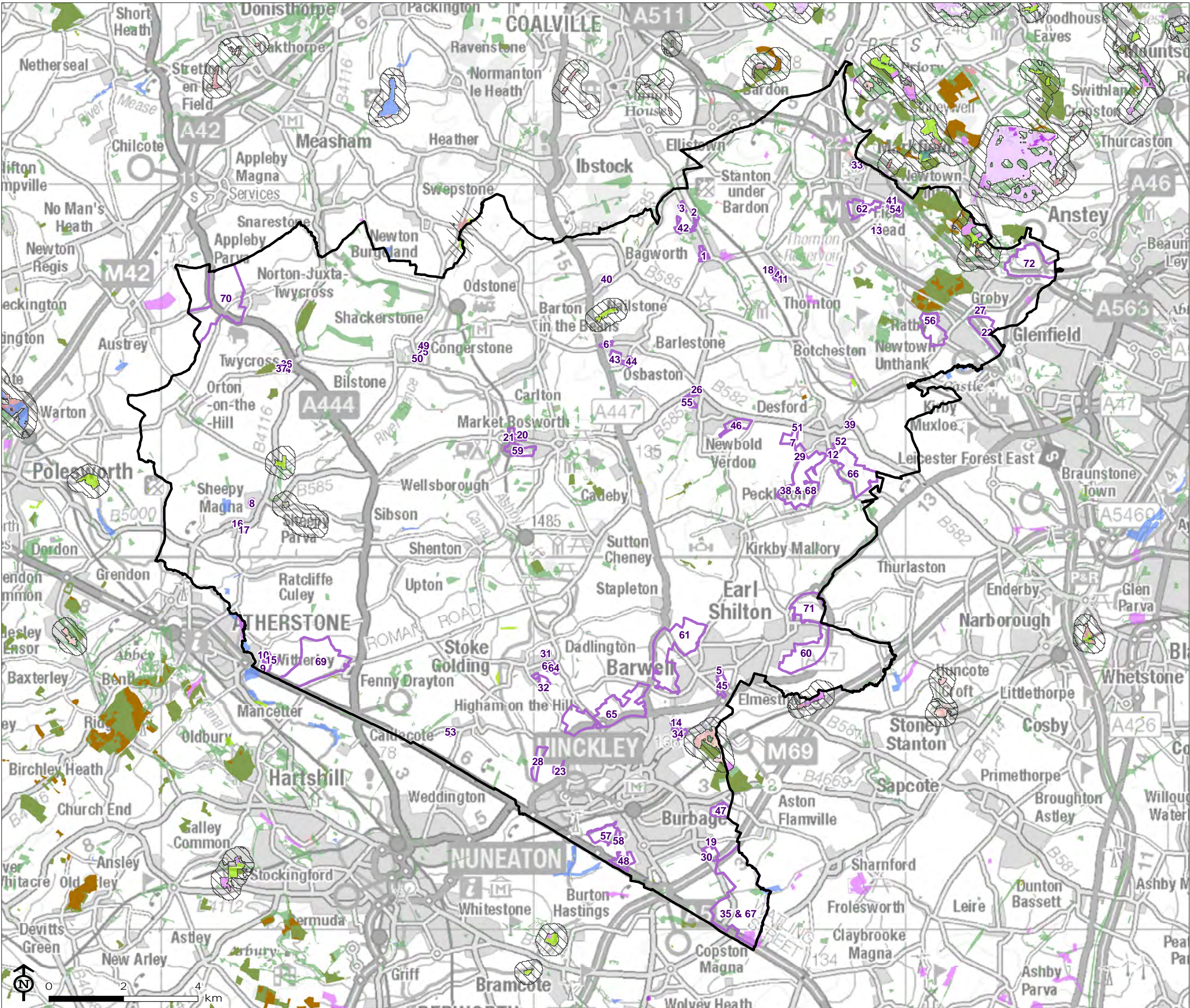
- Assessment site
- Site of Special Scientific Interest
- Local Nature Reserve
- Local Wildlife Site

Corresponding LUC ID and Council ID

13: AS407	54: LPR96
33: LPR43	62: LPR94
41: LPR70	

Map Scale @A3: 1:20,000





Hinckley & Bosworth Phase 1 Habitat survey

Figure 6.01: Priority Habitat and Ancient Woodland Illustrated with Assessment Sites

- Hinckley and Bosworth
 - Assessment site
 - Ancient woodland
 - Opportunity area*
- Priority habitat
- Coastal and floodplain grazing marsh
 - Deciduous woodland
 - Good quality semi-improved grassland
 - Lowland dry acid grassland
 - Lowland fens
 - Lowland heathland
 - Lowland meadows
 - Purple moor grass and rush pastures
 - Reedbeds
 - Traditional orchard

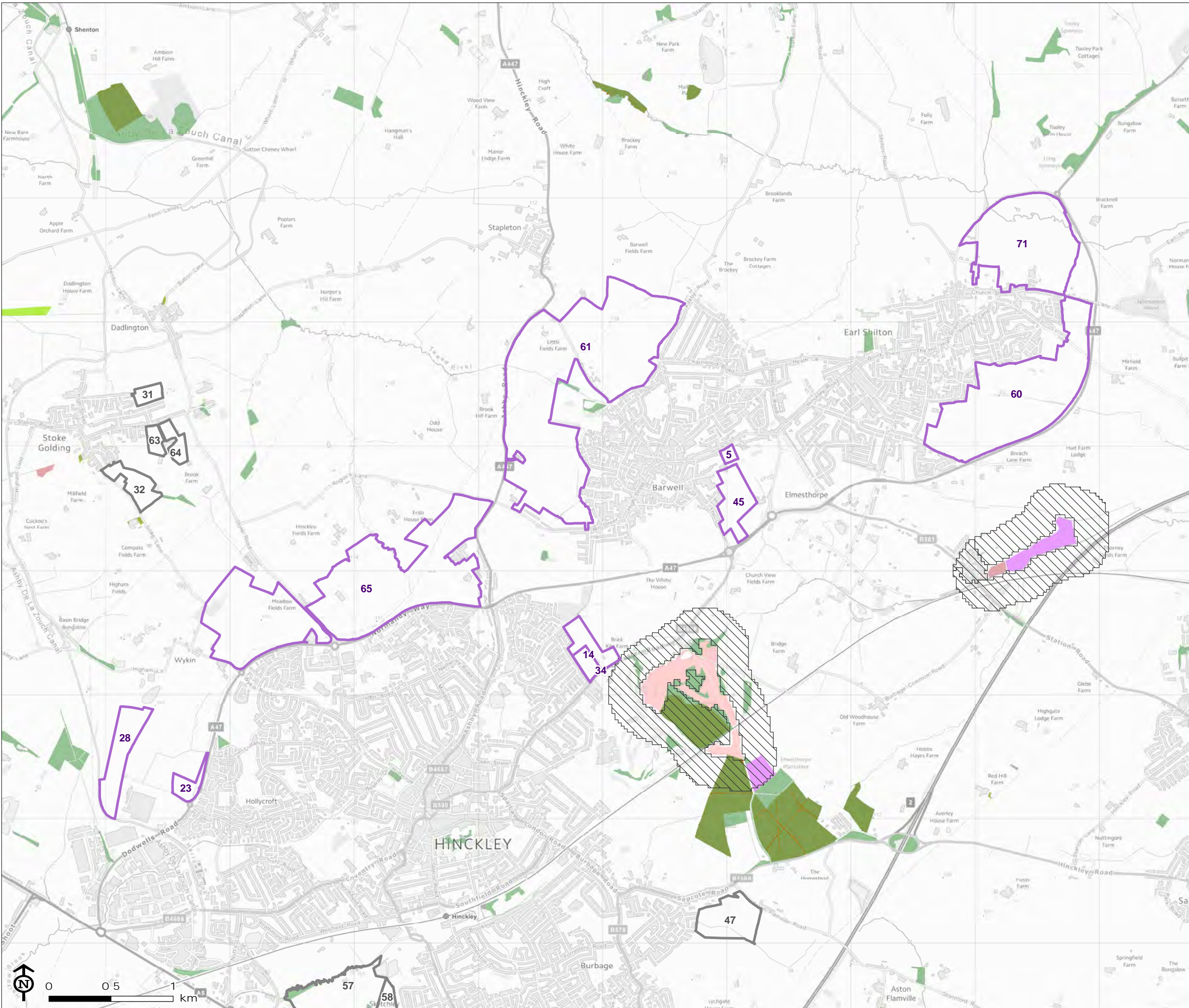
*Enhancement zones taken from Natural England's Habitat Networks data

Map Scale @A3: 1:100,000



Hinckley & Bosworth
Phase 1 Habitat survey

Figure 6.02: Hinckley, Barwell and Earl Shilton Priority Habitat and Ancient Woodland Illustrated with Assessment Sites



- Assessment site
- Ancient woodland
- Opportunity area
- Priority habitat
- Deciduous woodland
 - Good quality semi-improved grassland
 - Lowland dry acid grassland
 - Lowland fens
 - Lowland meadows
 - Traditional orchard

Corresponding LUC ID and Council ID

5: AS66	45: LPR75
14: AS303	60: AS237
23: AS1021	61: AS58
28: LPR31	65: AS1031
34: LPR50	71: Various

Map Scale @A3: 1:30,000

