



**Hinckley & Bosworth Borough
Council**

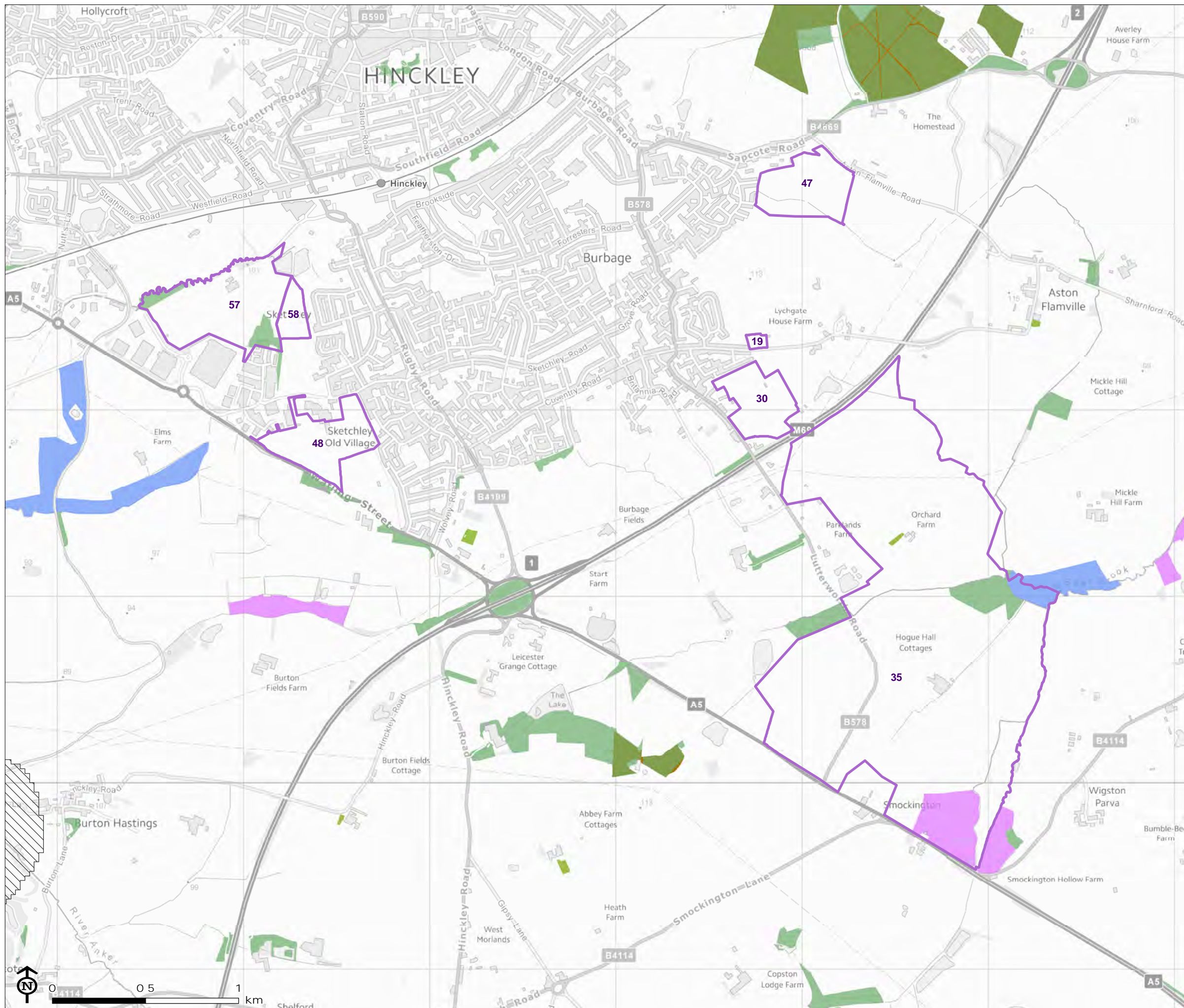
**Hinckley & Bosworth
Borough Phase 1
Habitat Study of Proposed
Allocation Sites**

Final report

Prepared by LUC

May 2020

Part 5: Drawings (figure 6.03 to figure
6.13)



Hinckley & Bosworth Phase 1 Habitat survey

Figure 6.03: Burbage, Sketchely and South of Burbage Priority Habitat and Ancient Woodland Illustrated with Assessment Sites

- Assessment site
- Ancient woodland
- Opportunity area
- Priority habitat**
- Coastal and floodplain grazing marsh
- Deciduous woodland
- Good quality semi-improved grassland
- Traditional orchard

Corresponding LUC ID and Council ID

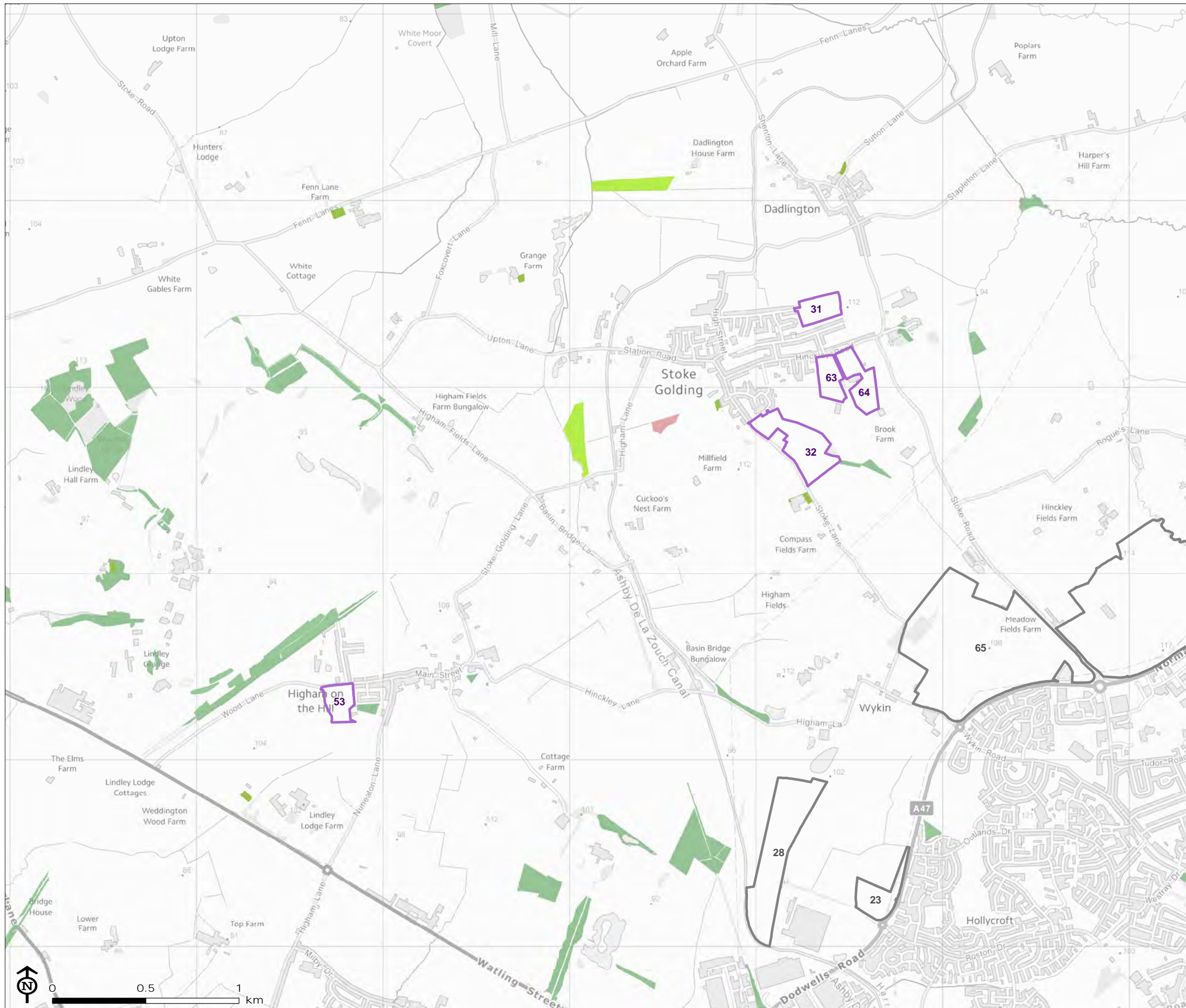
19: AS809	48: LPR26
30: LPR36	57: LPR44
35: LPR16	58: AS1015
47: AS134	

Map Scale @A3: 1:20,000



Hinckley & Bosworth Phase 1 Habitat survey

Figure 6.04: Stoke Golding and Higham on the Hill Priority Habitat and Ancient Woodland Illustrated with Assessment Sites



- Assessment site
- Priority habitat
- Deciduous woodland
- Lowland fens
- Lowland meadows
- Traditional orchard

Corresponding LUC ID and Council ID

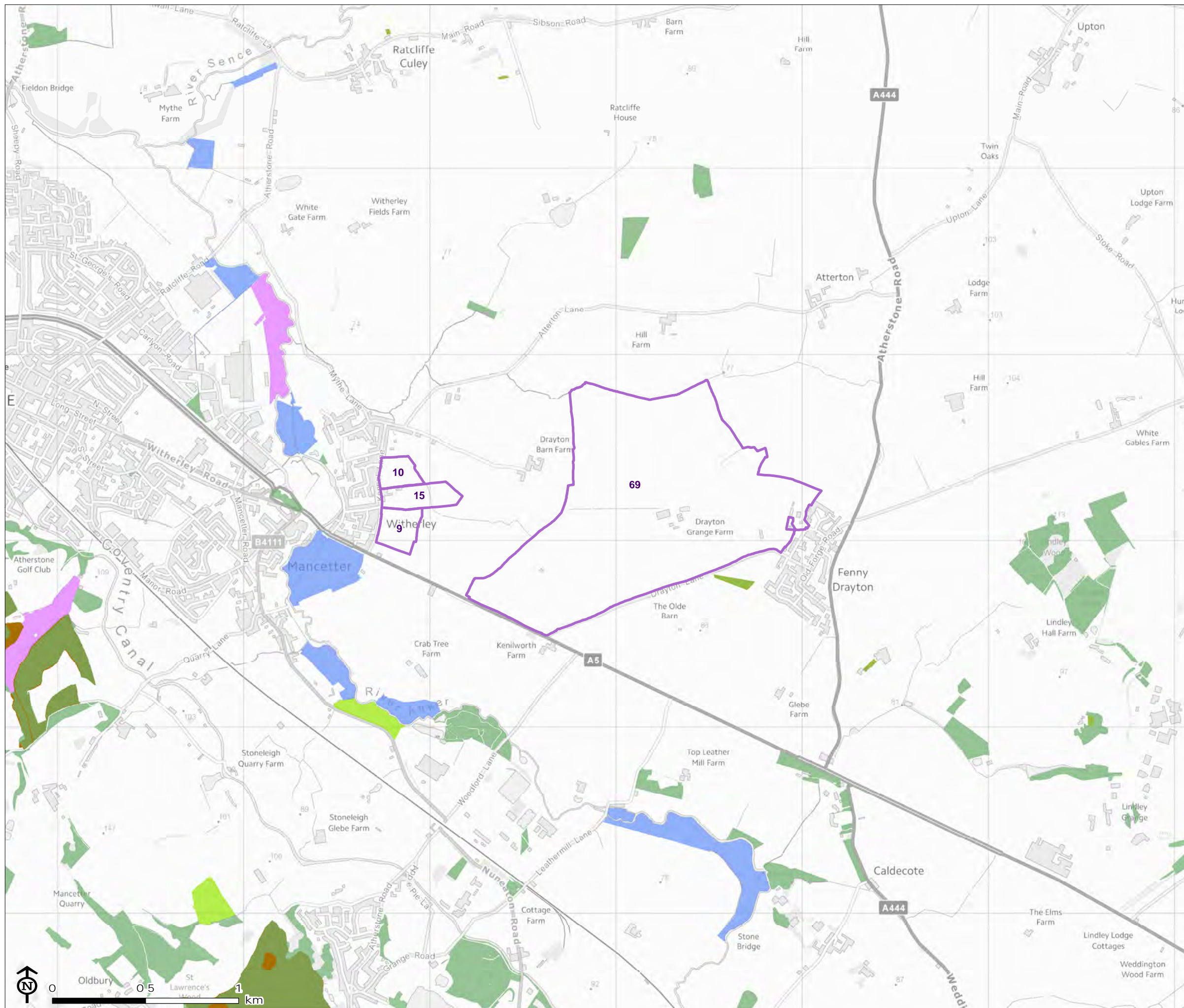
31: LPR39	63: As540
32: LPR41	64: As541
53: LPR90	

Map Scale @A3: 1:20,000



Hinckley & Bosworth
Phase 1 Habitat survey

Figure 6.05: Witherley and Fenny Drayton Priority Habitat and Ancient Woodland Illustrated with Assessment Sites



- Assessment site
- Ancient woodland
- Priority habitat
 - Coastal and floodplain grazing marsh
 - Deciduous woodland
 - Good quality semi-improved grassland
 - Lowland meadows
 - Traditional orchard

Corresponding LUC ID and Council ID

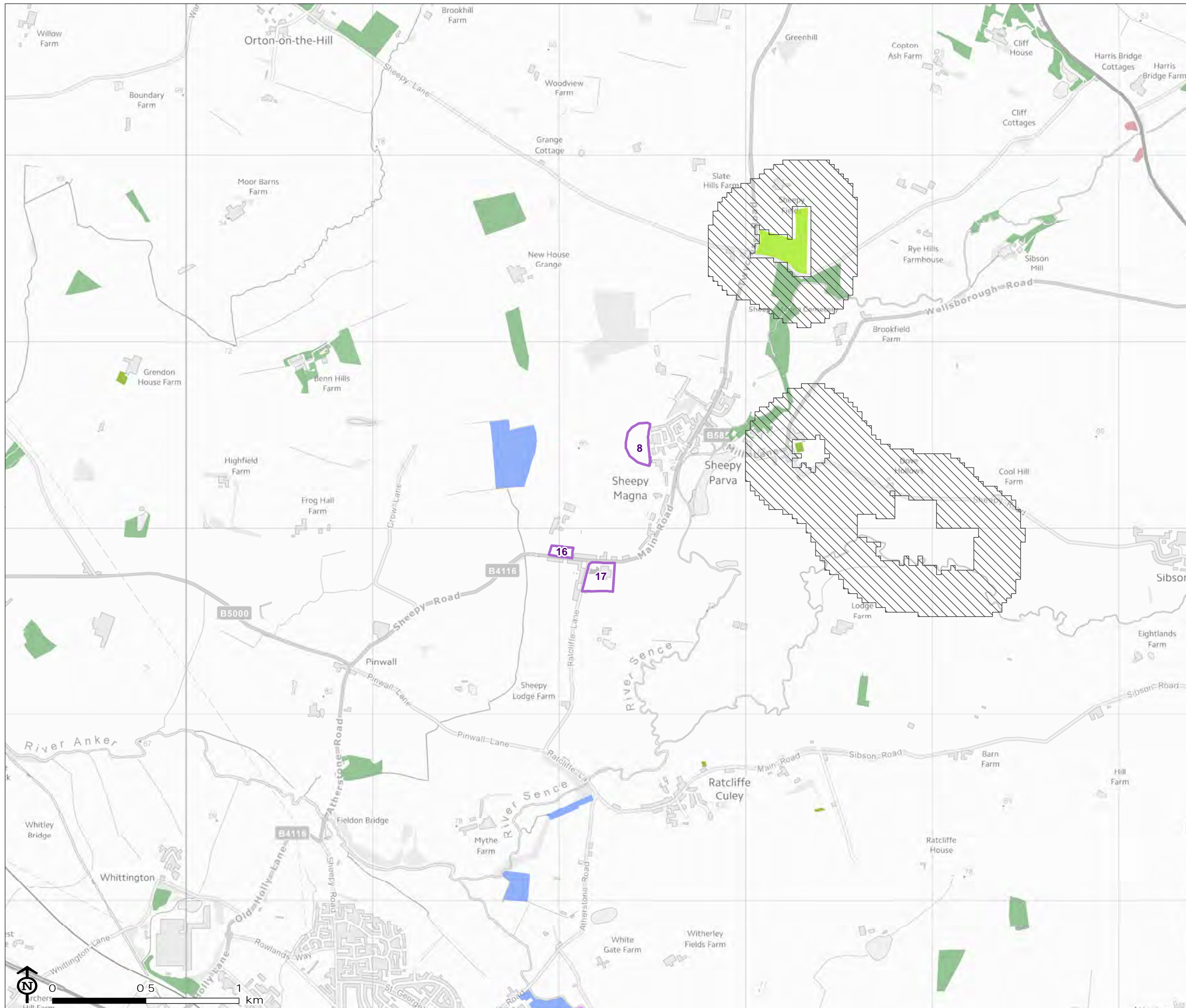
9: AS585	15: AS589
10: AS586	69: LPR88

Map Scale @A3: 1:20,000



Hinckley & Bosworth
Phase 1 Habitat survey

Figure 6.06: Sheepy Magna Priority Habitat and Ancient Woodland Illustrated with Assessment Sites



- Assessment site
- Opportunity area
- Priority habitat
- Coastal and floodplain grazing marsh
- Deciduous woodland
- Good quality semi-improved grassland
- Lowland fens
- Lowland meadows
- Traditional orchard

Corresponding LUC ID and Council ID

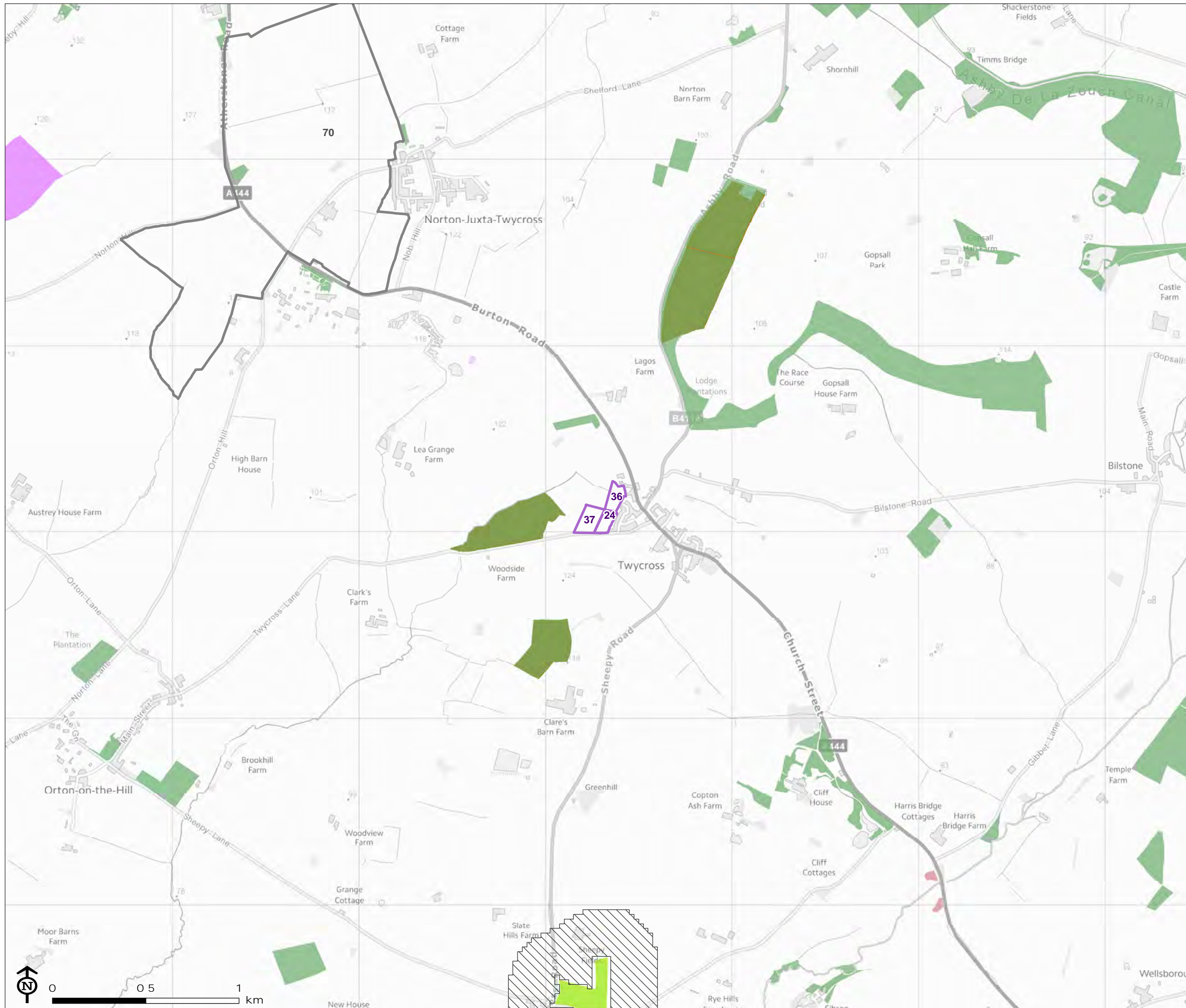
8: AS519 17: AS618
16: AS616

Map Scale @A3: 1:20,000



Hinckley & Bosworth
Phase 1 Habitat survey

Figure 6.07: Twycross Priority Habitat and Ancient Woodland Illustrated with Assessment Sites



- Assessment site
- Ancient woodland
- Opportunity area
- Priority habitat**
- Deciduous woodland
- Good quality semi-improved grassland
- Lowland fens
- Lowland heathland
- Lowland meadows

Corresponding LUC ID and Council ID

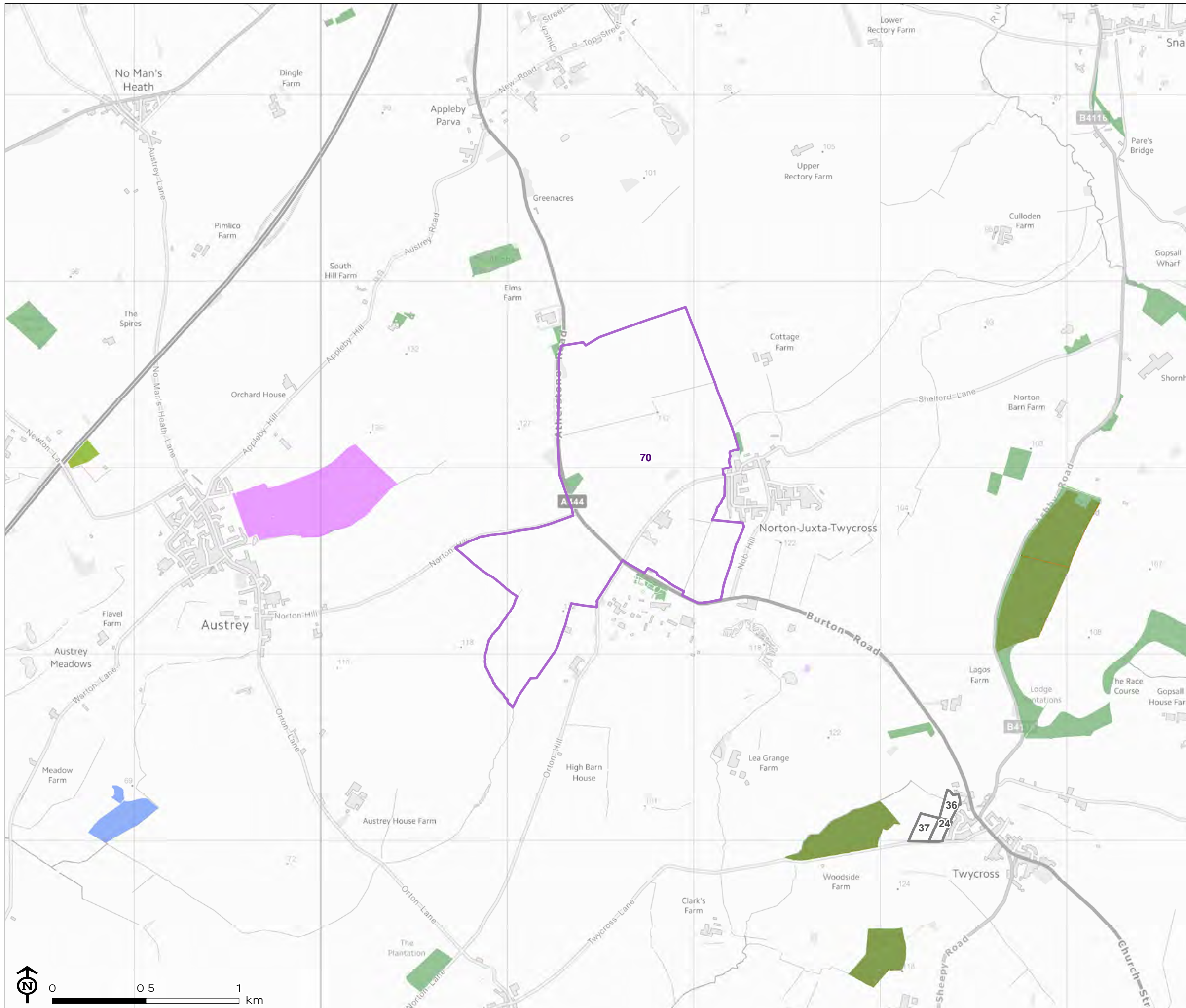
24: LPR10 37: LPR65
36: LPR64

Map Scale @A3: 1:20,000



Hinckley & Bosworth
Phase 1 Habitat survey

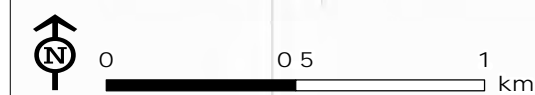
Figure 6.08: Norton Juxta Twycross
Priority Habitat and Ancient Woodland
Illustrated with Assessment Sites



- Assessment site
- Ancient woodland
- Priority habitat
 - Coastal and floodplain grazing marsh
 - Deciduous woodland
 - Good quality semi-improved grassland
 - Lowland heathland
 - Traditional orchard

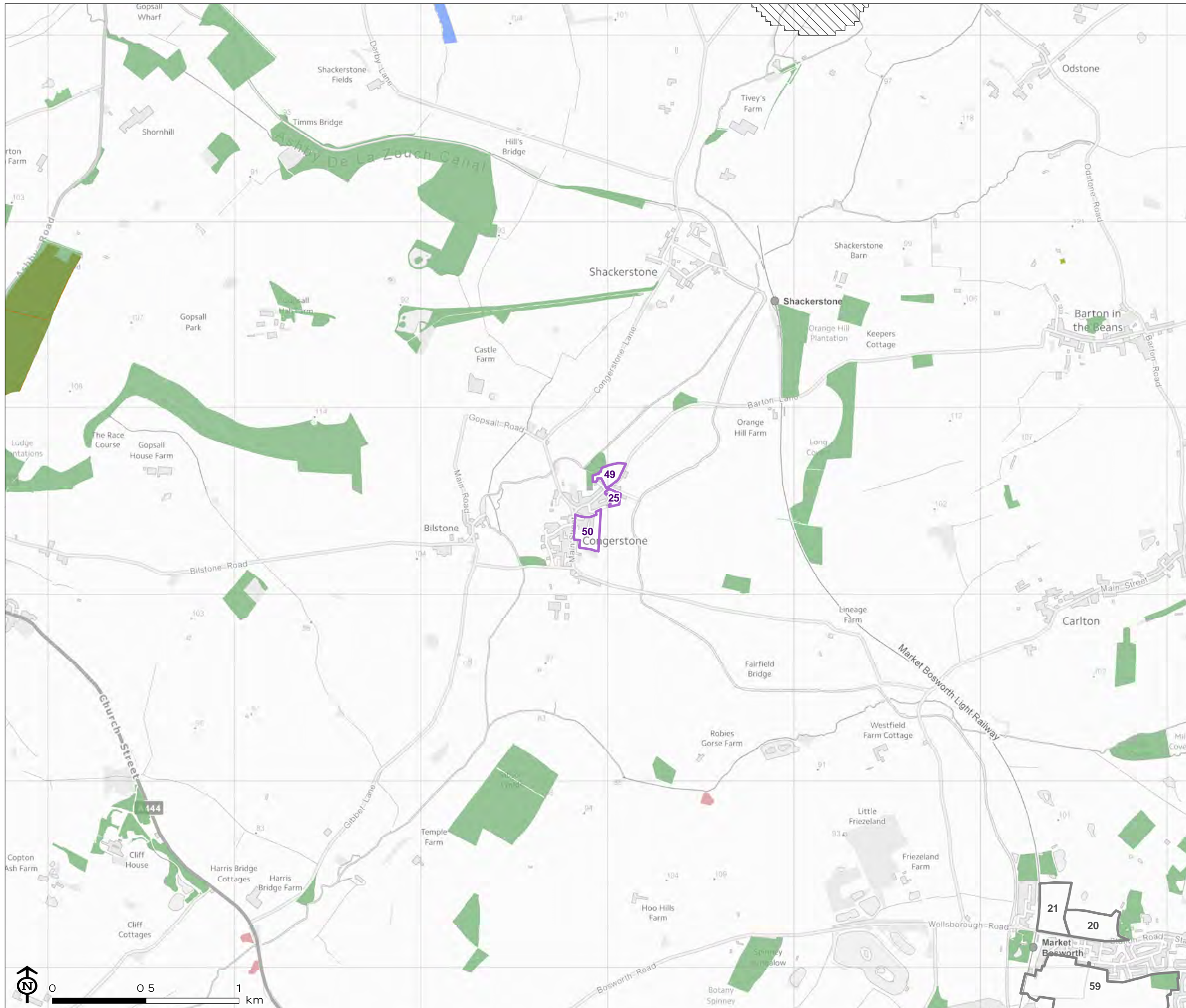
Corresponding LUC ID and Council ID
70: LPR102








Map Scale @A3: 1:20,000



Hinckley & Bosworth
Phase 1 Habitat survey

Figure 6.09: Congerstone Priority Habitat and Ancient Woodland Illustrated with Assessment Sites



-  Assessment site
-  Ancient woodland
-  Opportunity area
- Priority habitat**
-  Coastal and floodplain grazing marsh
-  Deciduous woodland
-  Lowland fens
-  Traditional orchard

Corresponding LUC ID and Council ID

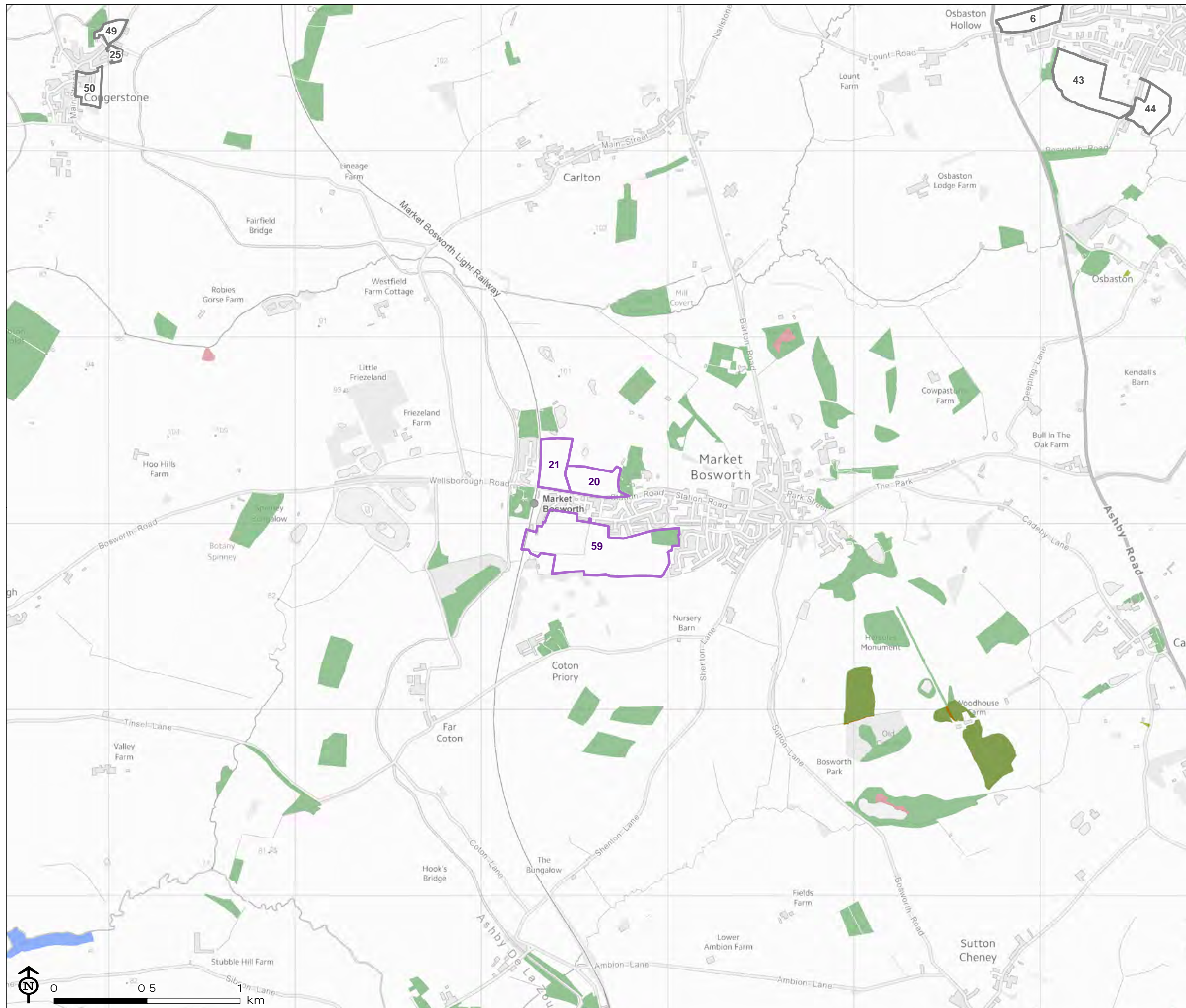
25: LPR18 50: LPR80
49: LPR79

Map Scale @A3: 1:20,000



Hinckley & Bosworth
Phase 1 Habitat survey

Figure 6.10: Market Bosworth Priority Habitat and Ancient Woodland Illustrated with Assessment Sites

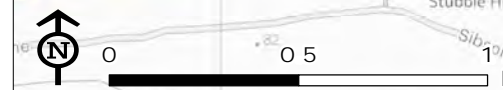


- Assessment site
- Ancient woodland
- Priority habitat
- Coastal and floodplain grazing marsh
- Deciduous woodland
- Lowland fens
- Traditional orchard

Corresponding LUC ID and Council ID

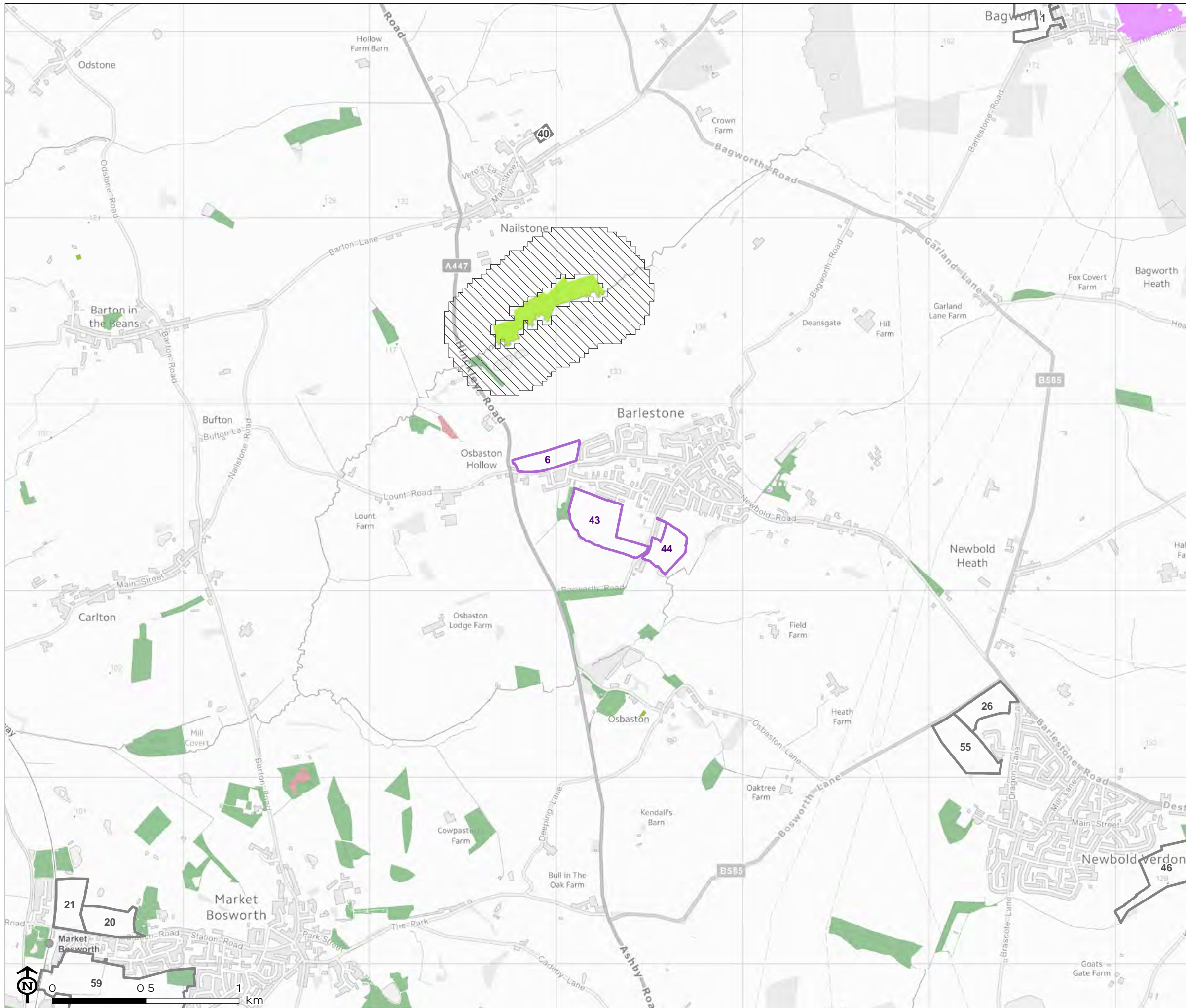
20: AS392 59: LPR9
21: AS1050

Map Scale @A3: 1:20,000



Hinckley & Bosworth
Phase 1 Habitat survey

Figure 6.11: Barlestone Priority Habitat and Ancient Woodland Illustrated with Assessment Sites



- Assessment site
- Opportunity area
- Priority habitat
- Deciduous woodland
- Good quality semi-improved grassland
- Lowland fens
- Lowland meadows
- Traditional orchard

Corresponding LUC ID and Council ID

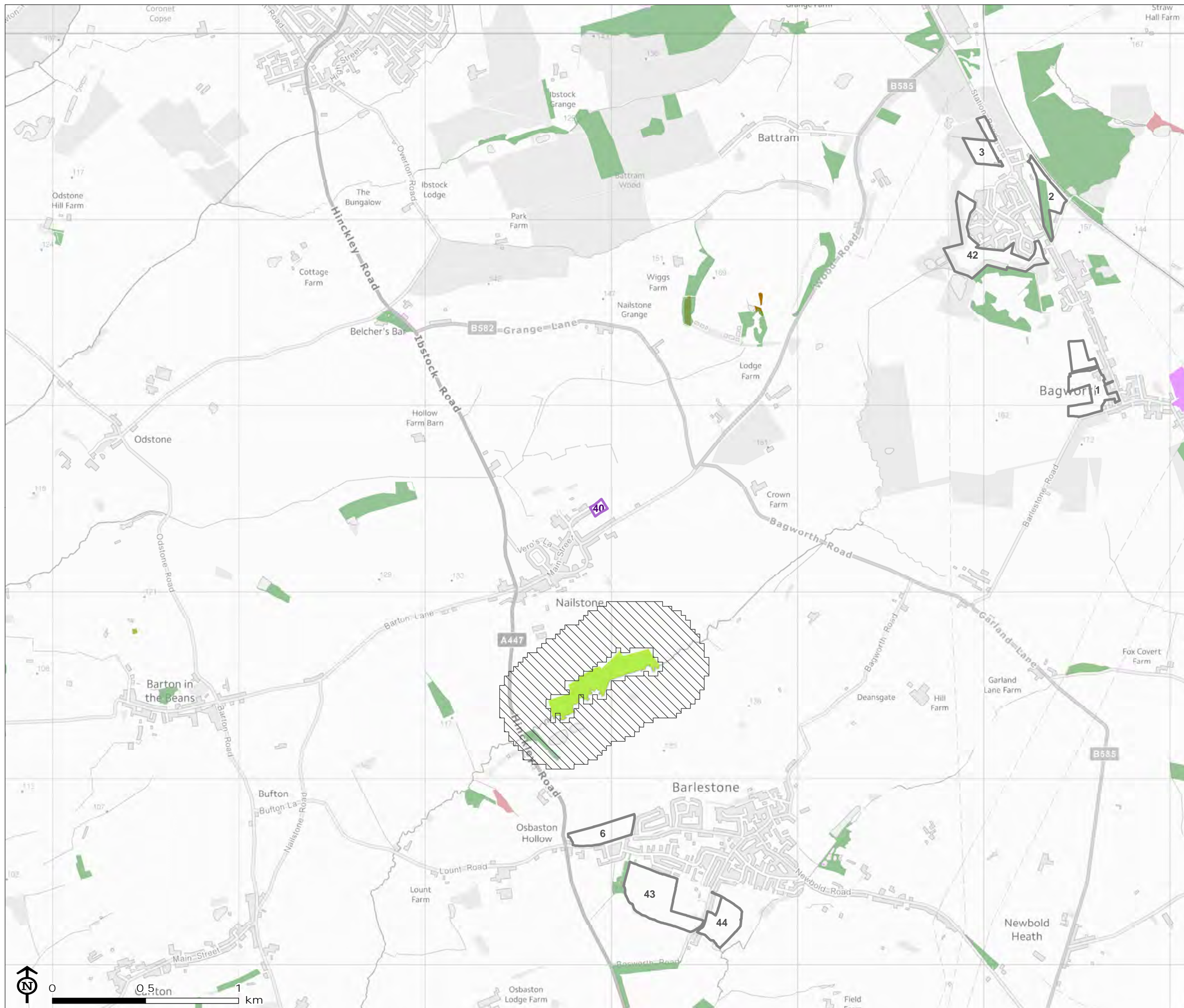
6: AS455 44: LPR72
43: AS53

Map Scale @A3: 1:20,000



Hinckley & Bosworth
Phase 1 Habitat survey

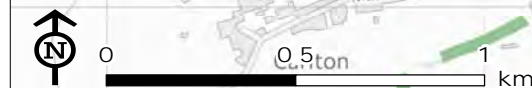
Figure 6.12: Nailstone Priority Habitat and Ancient Woodland Illustrated with Assessment Sites



- Assessment site
- Ancient woodland
- Opportunity area
- Priority habitat**
- Deciduous woodland
- Good quality semi-improved grassland
- Lowland fens
- Lowland meadows
- Traditional orchard

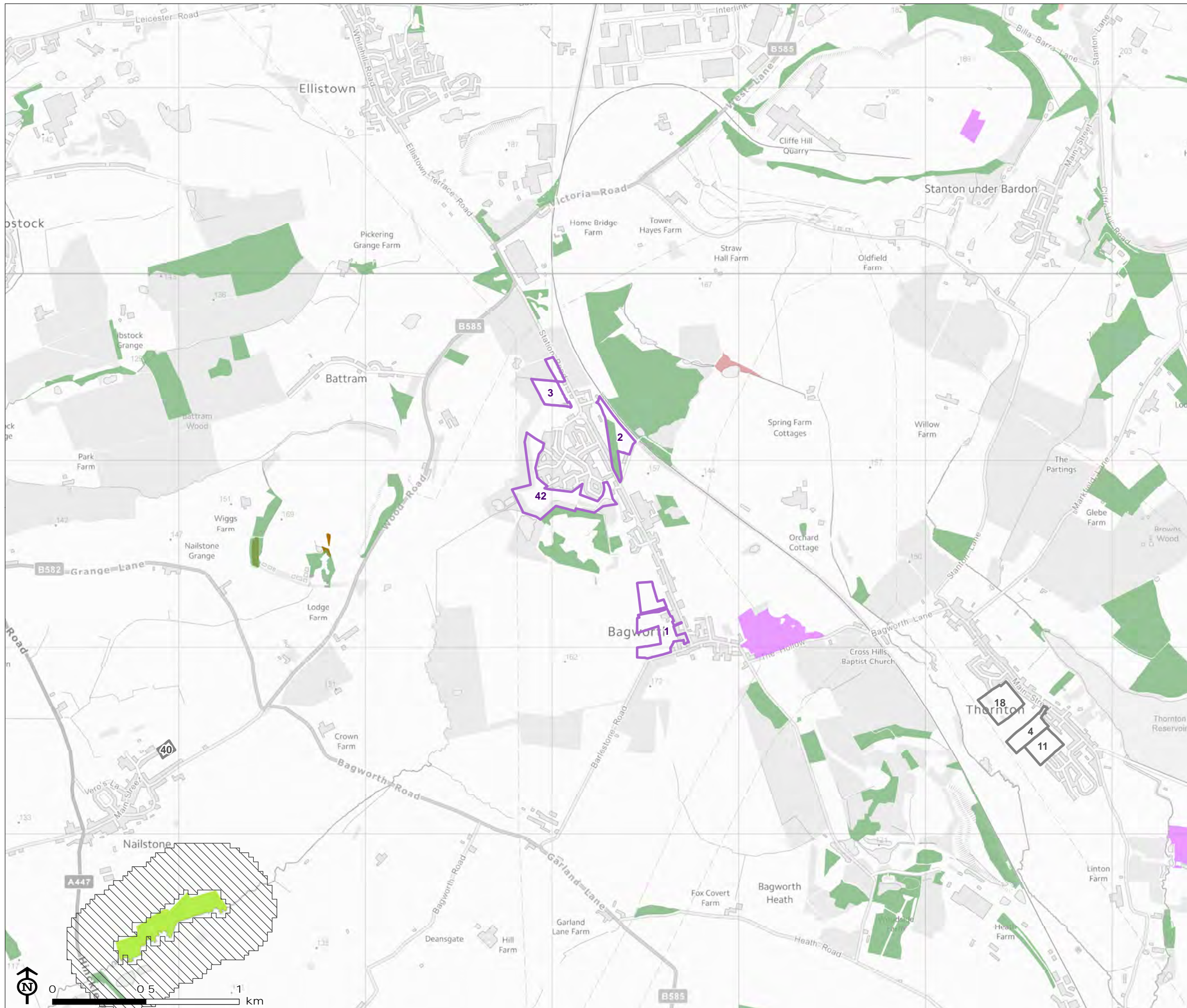
Corresponding LUC ID and Council ID
40: AS1030

Map Scale @A3: 1:20,000



Hinckley & Bosworth
Phase 1 Habitat survey

Figure 6.13: Bagworth Priority Habitat and Ancient Woodland Illustrated with Assessment Sites



- Assessment site
- Ancient woodland
- Opportunity area
- Priority habitat**
- Deciduous woodland
- Good quality semi-improved grassland
- Lowland dry acid grassland
- Lowland fens
- Lowland meadows

Corresponding LUC ID and Council ID

- | | |
|---------|--------------|
| 1: AS5 | 3: AS16/1027 |
| 2: AS12 | 42: LPR71 |

Map Scale @A3: 1:20,000

