



**Hinckley & Bosworth Borough
Council**

**Hinckley & Bosworth
Borough Phase 1
Habitat Study of Proposed
Allocation Sites**

Final report

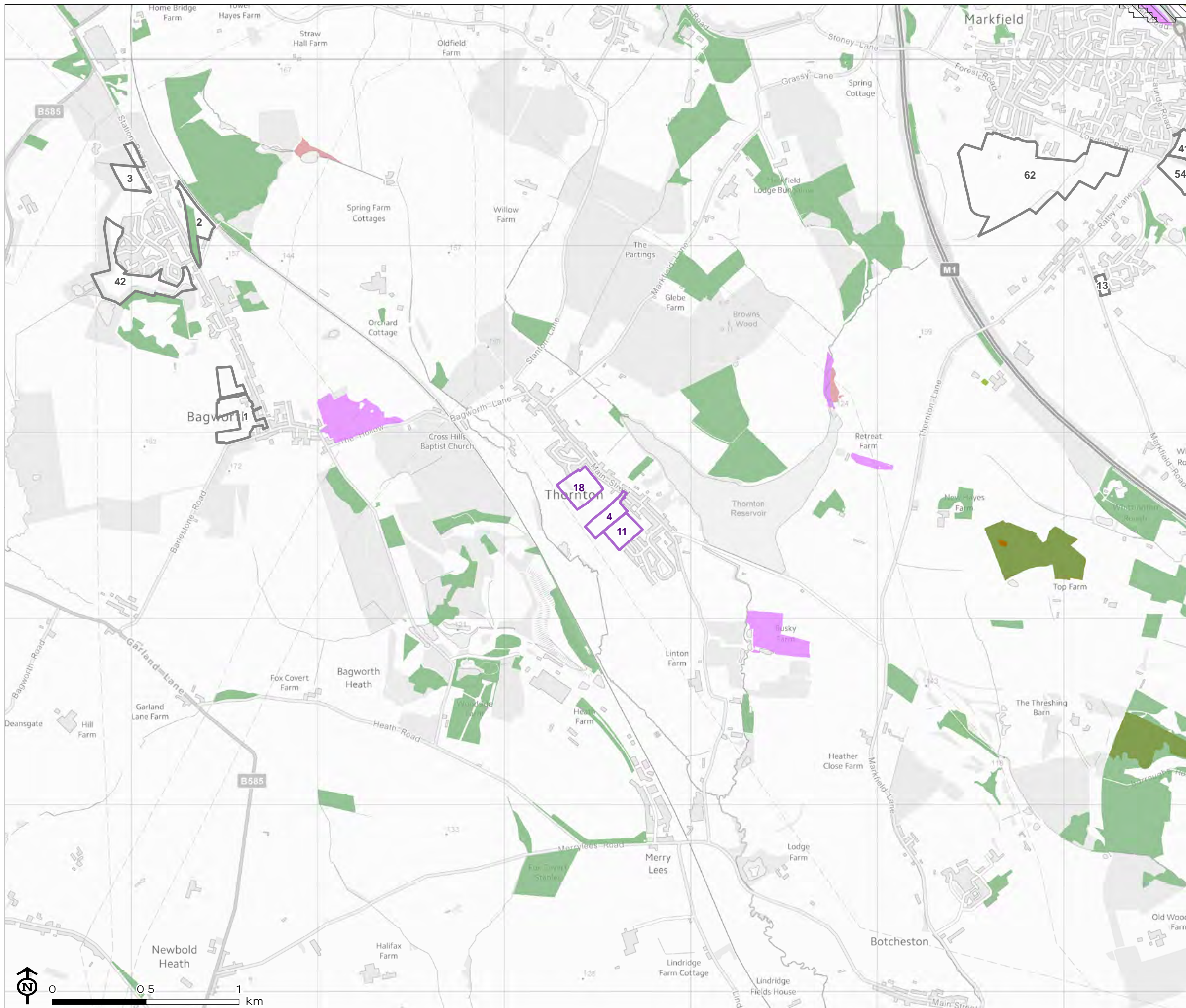
Prepared by LUC

May 2020

Part 6: Drawings (figure 6.14 to figure 7.04)

Hinckley & Bosworth
Phase 1 Habitat survey

Figure 6.14: Thornton Priority Habitat and Ancient Woodland Illustrated with Assessment Sites



- Assessment site
- Ancient woodland
- Opportunity area
- Priority habitat**
- Deciduous woodland
- Good quality semi-improved grassland
- Lowland fens
- Traditional orchard

Corresponding LUC ID and Council ID

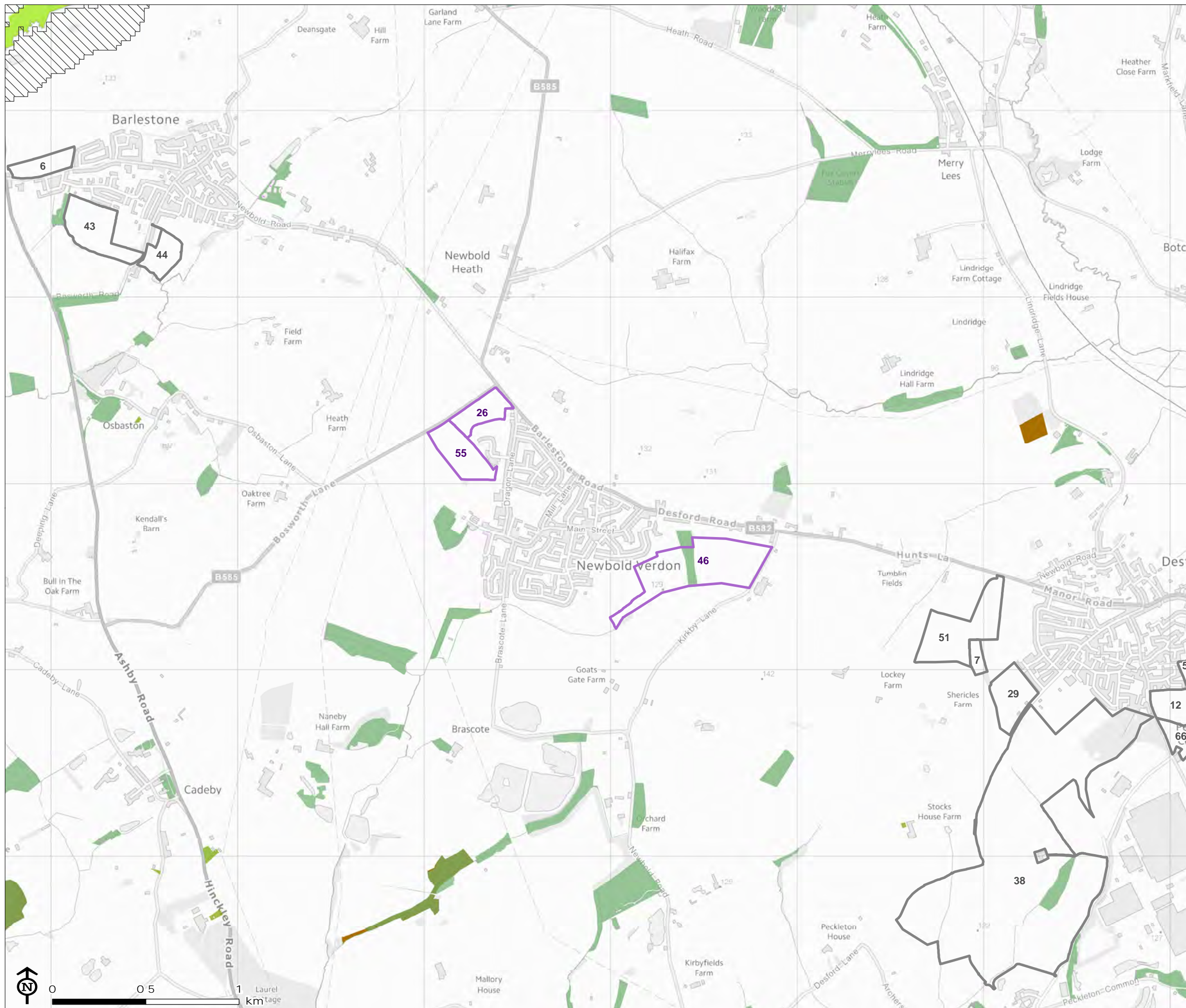
4: AS32 18: AS686
11: AS33

Map Scale @A3: 1:20,000



Hinckley & Bosworth Phase 1 Habitat survey

Figure 6.15: Newbold Verdon
Priority Habitat and Ancient
Woodland Illustrated with
Assessment Sites



- Assessment site
- Ancient woodland
- Opportunity area
- Priority habitat**
- Deciduous woodland
- Good quality semi-improved grassland
- Lowland meadows
- Traditional orchard

Corresponding LUC ID and Council ID

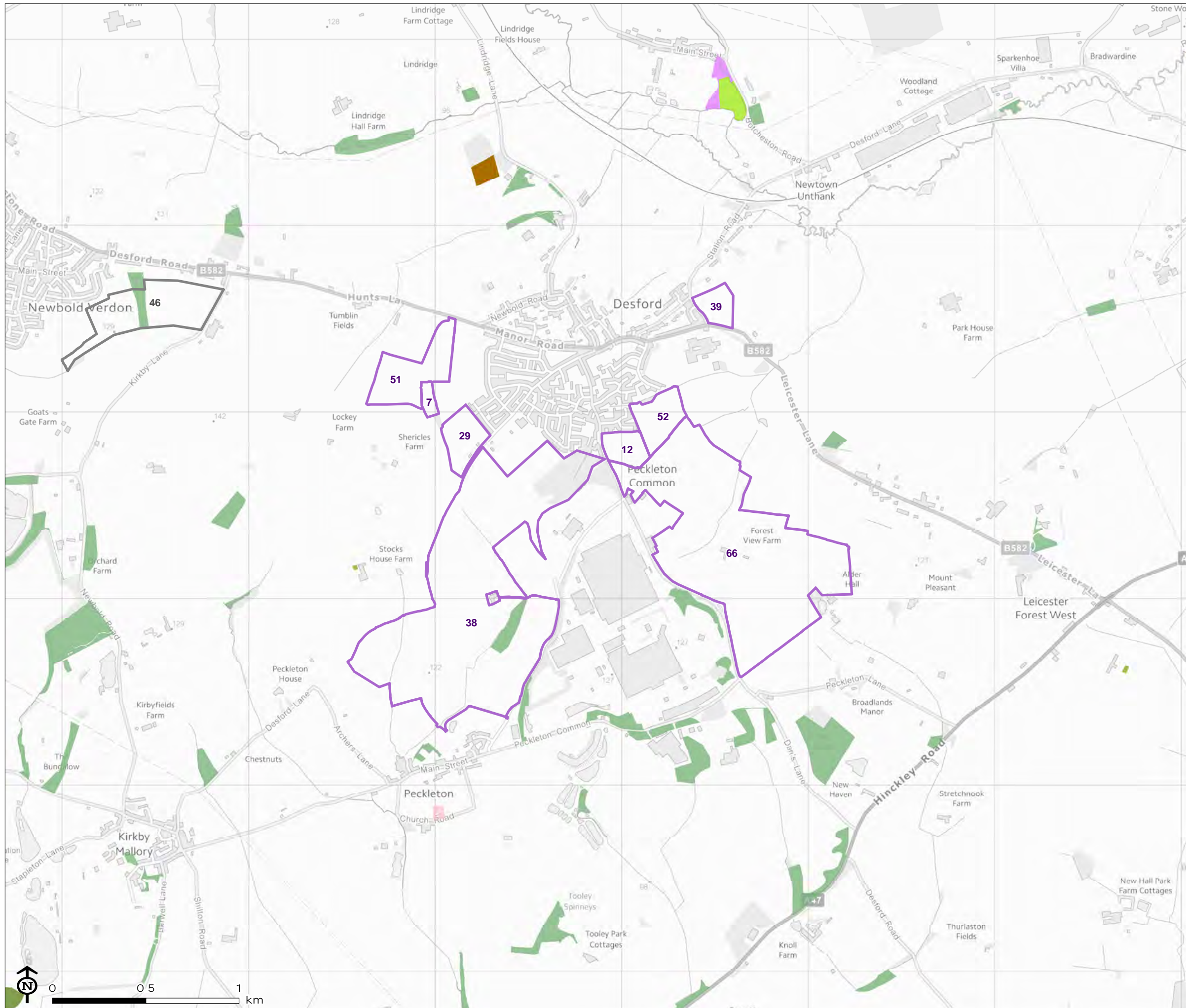
26: LPR29 55: LPR100
46: AS445

Map Scale @A3: 1:20,000



Hinckley & Bosworth Phase 1 Habitat survey

Figure 6.16: Desford and Peckleton Priority Habitat and Ancient Woodland Illustrated with Assessment Sites



- Assessment site
- Ancient woodland
- Priority habitat
 - Coastal and floodplain grazing marsh
 - Deciduous woodland
 - Good quality semi-improved grassland
 - Lowland dry acid grassland
 - Lowland meadows
 - Traditional orchard

Corresponding LUC ID and Council ID

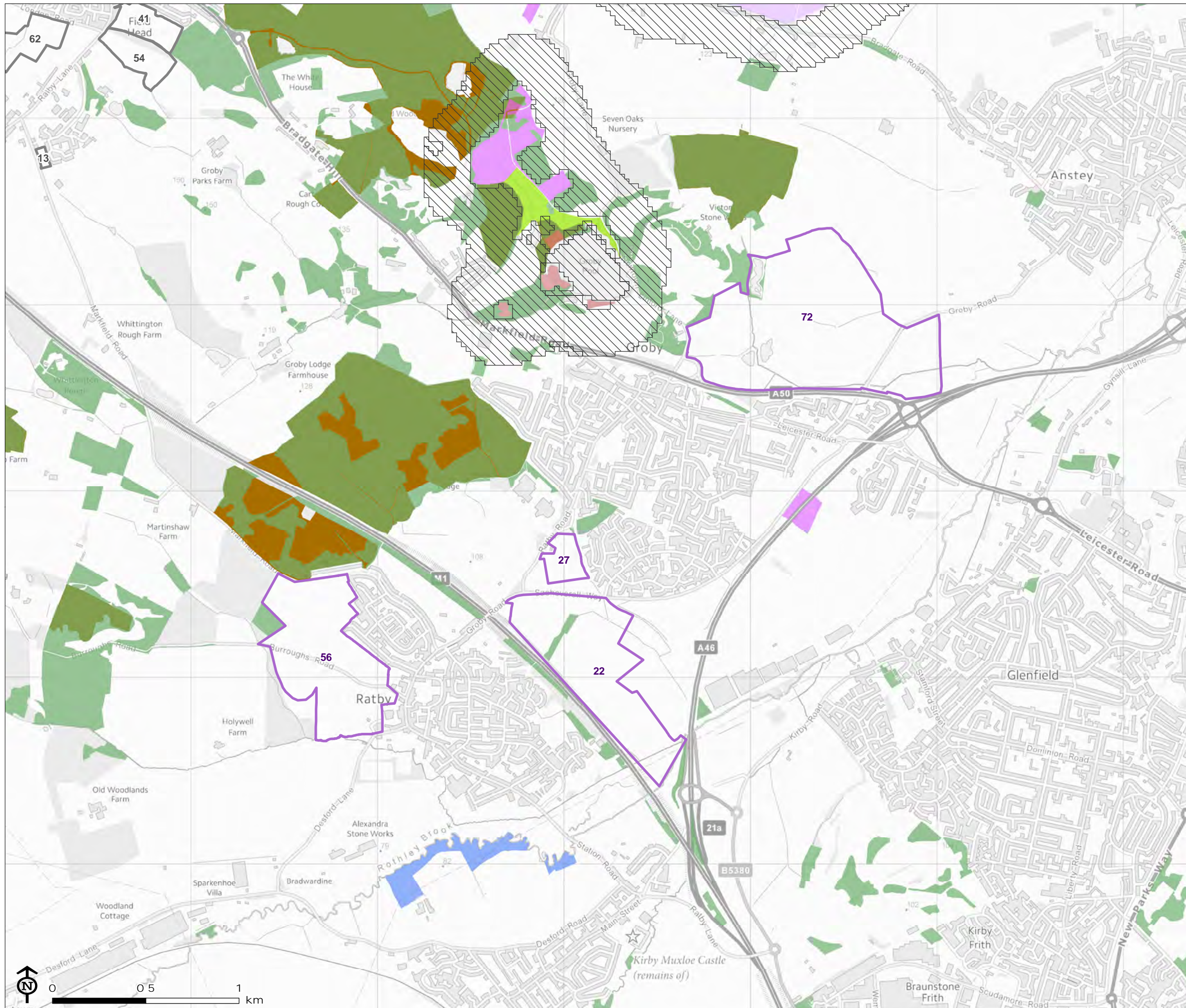
7: AS466	39: LPR37
12: AS201	51: LPR83
29: LPR35	52: LPR119
38: LPR24	66: AS200

Map Scale @A3: 1:20,000



Hinckley & Bosworth
Phase 1 Habitat survey

Figure 6.17: Groby and Ratby Priority Habitat and Ancient Woodland Illustrated with Assessment Sites



- Assessment site
- Ancient woodland
- Opportunity area
- Priority habitat**
- Coastal and floodplain grazing marsh
- Deciduous woodland
- Good quality semi-improved grassland
- Lowland fens
- Lowland heathland
- Lowland meadows

Corresponding LUC ID and Council ID

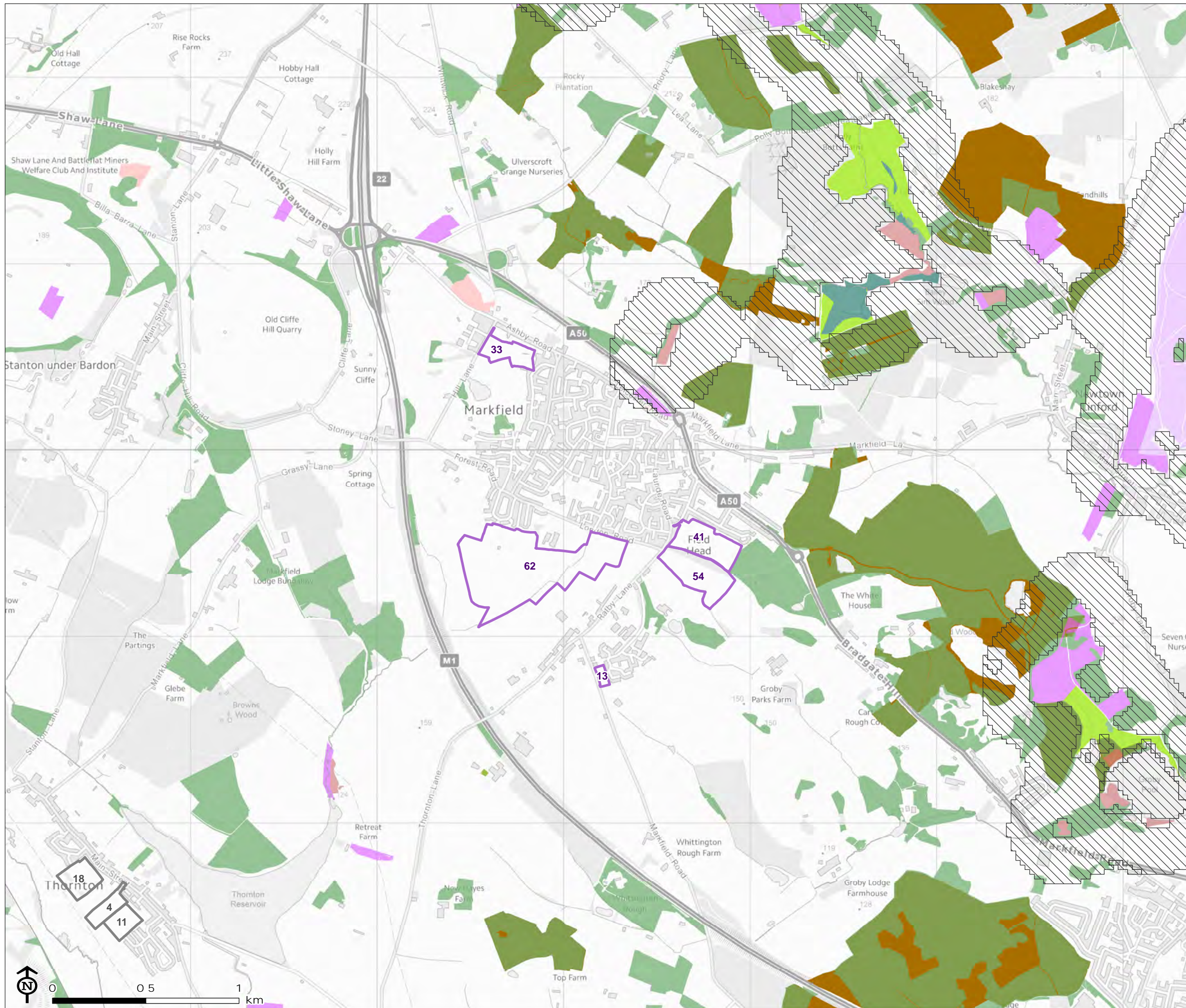
22: AS1008	56: LPR107
27: LPR30	72: Various

Map Scale @A3: 1:20,000



Hinckley & Bosworth
Phase 1 Habitat survey

Figure 6.18: Markfield Priority Habitat and Ancient Woodland Illustrated with Assessment Sites

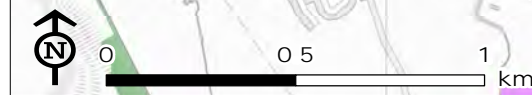


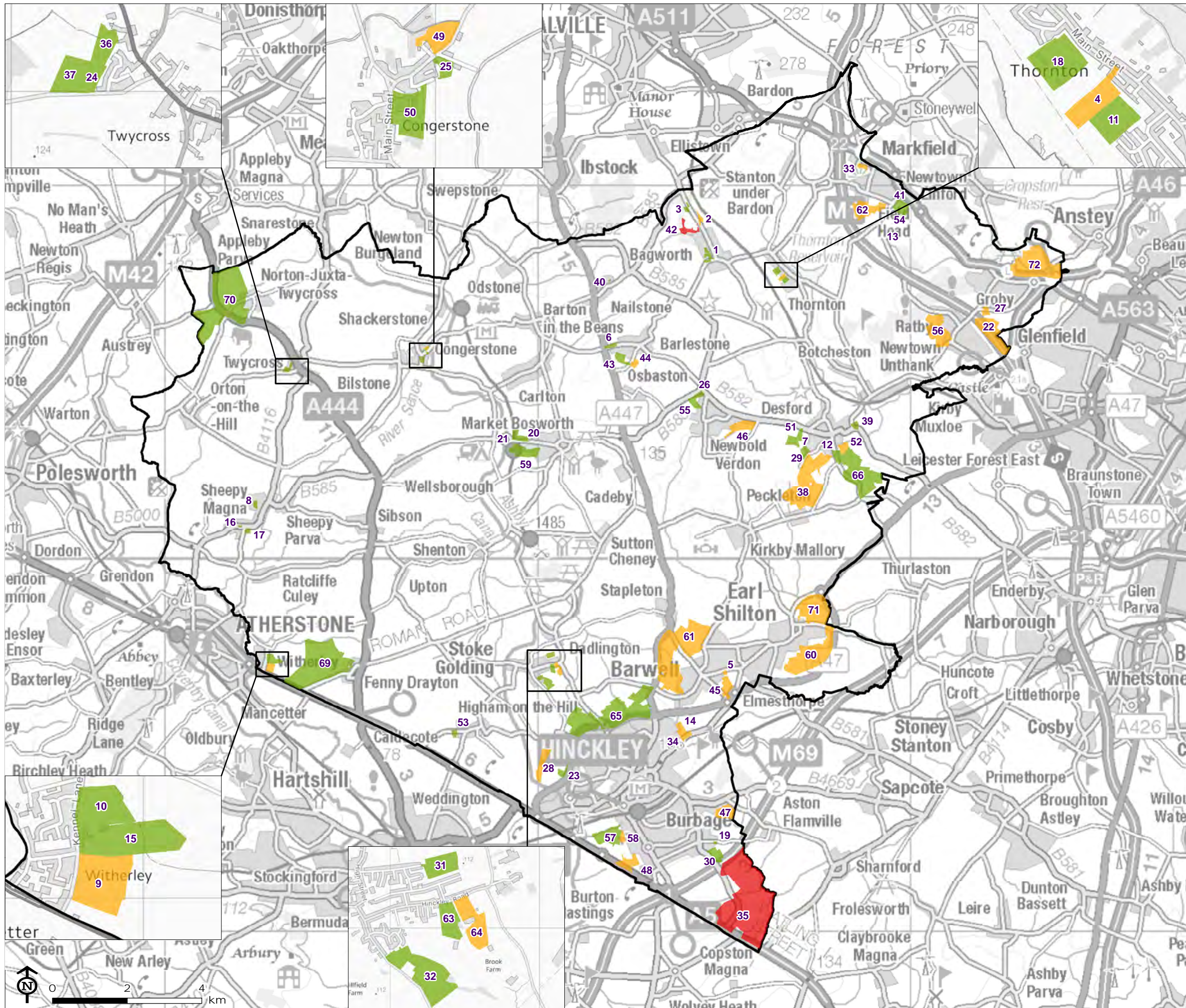
- Assessment site
- Ancient woodland
- Opportunity area
- Priority habitat**
- Deciduous woodland
- Good quality semi-improved grassland
- Lowland dry acid grassland
- Lowland fens
- Lowland heathland
- Lowland meadows
- Reedbeds
- Traditional orchard

Corresponding LUC ID and Council ID

- | | |
|-----------|-----------|
| 13: AS407 | 54: LPR96 |
| 33: LPR43 | 62: LPR94 |
| 41: LPR70 | |

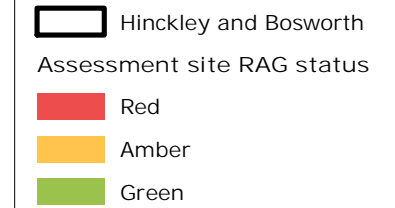
Map Scale @A3: 1:20,000





Hinckley & Bosworth Phase 1 Habitat survey

Figure 7.01: Assessment Site RAG (Red, Amber, Green) Status



Corresponding LUC ID and Council ID

1: AS5	36: LPR64
2: AS12	37: LPR65
3: AS16/1027	38: LPR24
4: AS32	39: LPR37
5: AS66	40: AS1030
6: AS455	41: LPR70
7: AS466	42: LPR71
8: AS519	43: AS53
9: AS585	44: LPR72
10: AS586	45: LPR75
11: AS33	46: AS445
12: AS201	47: AS134
13: AS407	48: LPR26
14: AS303	49: LPR79
15: AS589	50: LPR80
16: AS616	51: LPR83
17: AS618	52: LPR119
18: AS686	53: LPR90
19: AS809	54: LPR96
20: AS392	55: LPR100
21: AS1050	56: LPR107
22: AS1008	57: LPR44
23: AS1021	58: AS1015
24: LPR10	59: LPR9
25: LPR18	60: AS237
26: LPR29	61: AS58
27: LPR30	62: LPR94
28: LPR31	63: AS540
29: LPR35	64: AS541
30: LPR36	65: AS1031
31: LPR39	66: AS200
32: LPR41	69: LPR88
33: LPR43	70: LPR102
34: LPR50	71: Various
35: LPR16	72: Various

Map Scale @A3: 1:100,000



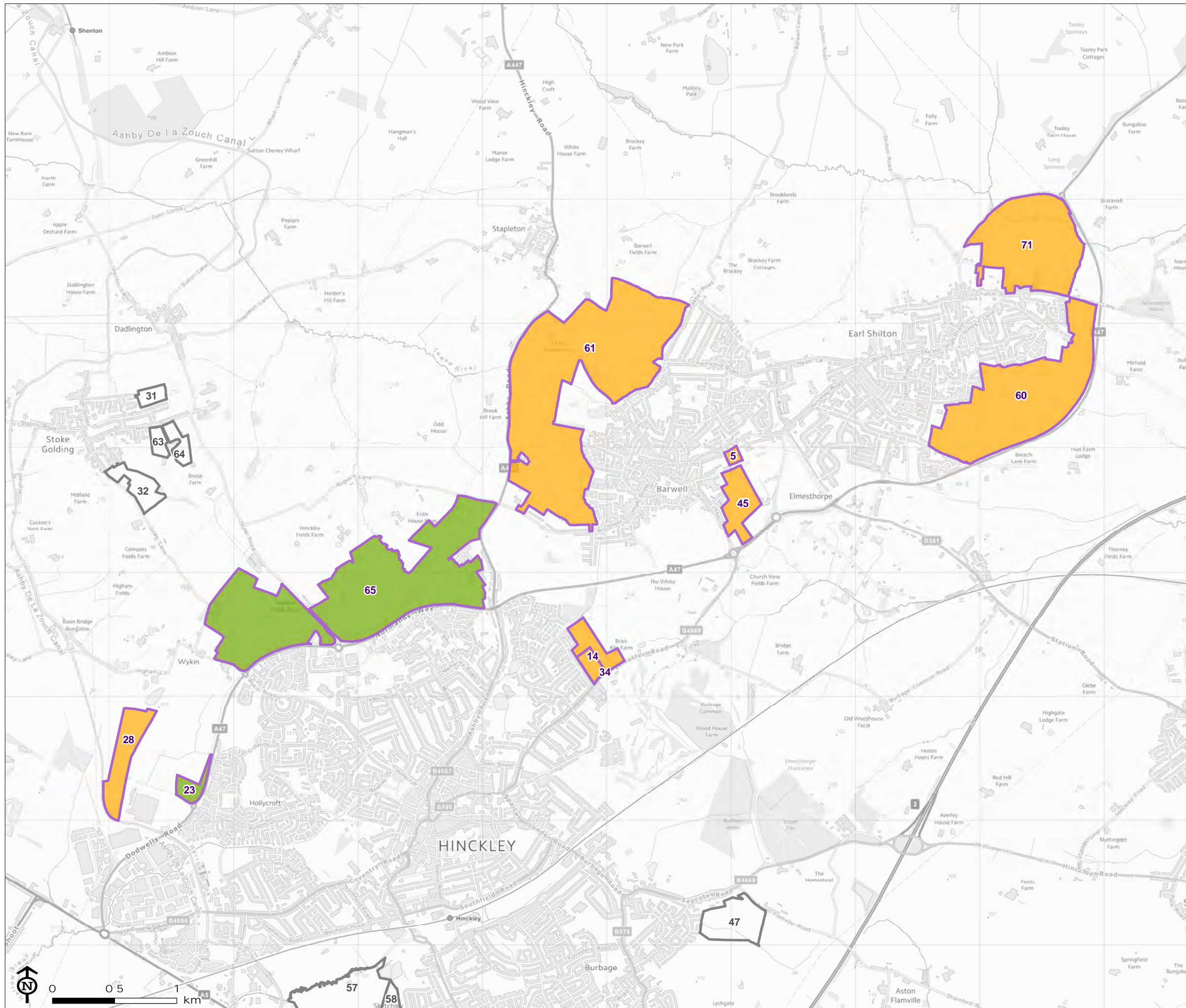
Hinckley & Bosworth Phase 1 Habitat survey

Figure 7.02: Hinckley, Barwell and Earl Shilton Assessment Site RAG (Red, Amber, Green) Status

- Assessment site
- Assessment site RAG status
- Red
- Amber
- Green

Corresponding LUC ID and Council ID

5: AS66	45: LPR75
14: AS303	60: AS237
23: AS1021	61: AS58
28: LPR31	65: AS1031
34: LPR50	71: Various

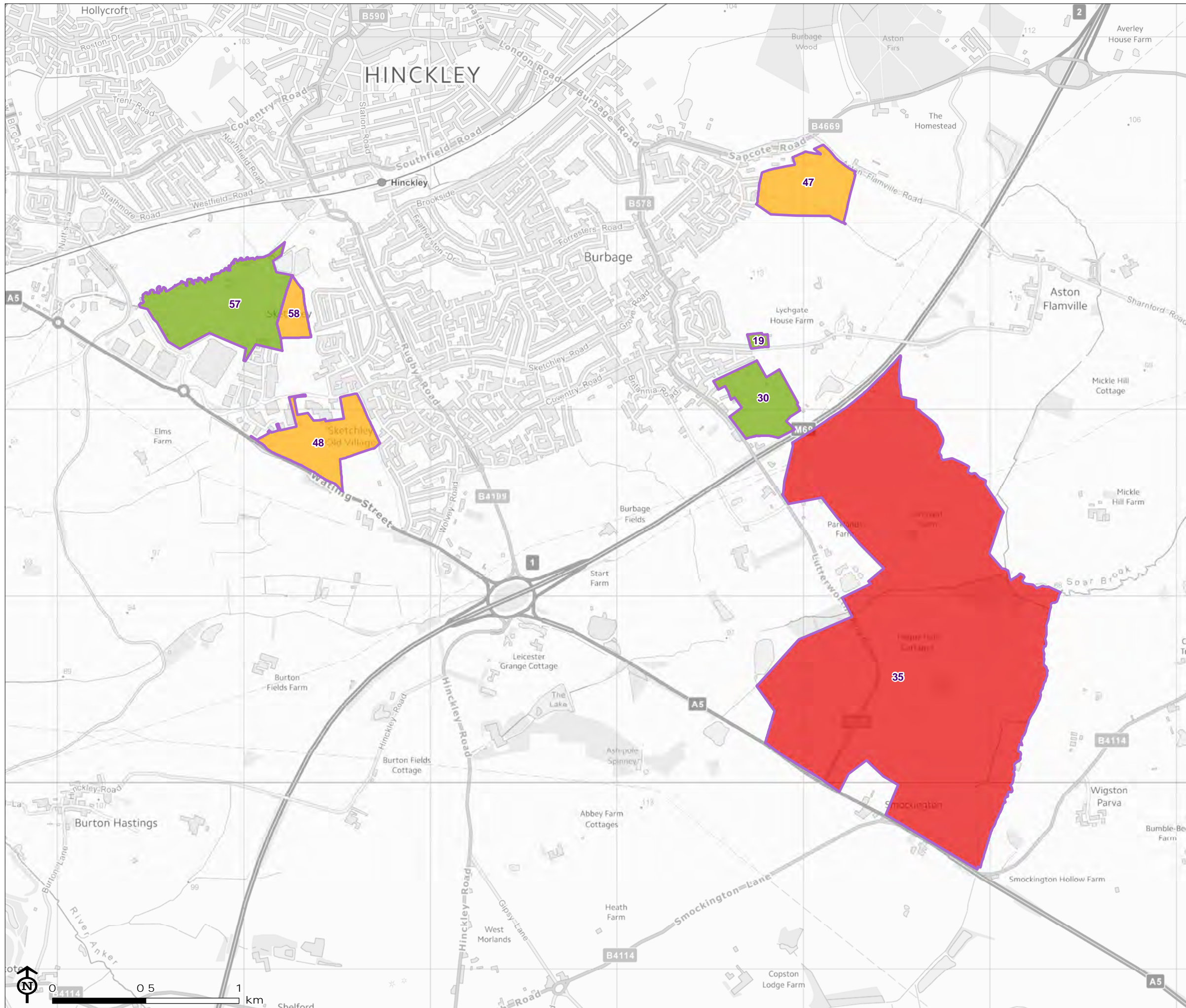


Map Scale @A3: 1:30,000



Hinckley & Bosworth Phase 1 Habitat survey

Figure 7.03: Burbage, Sketchley and South of Burbage Assessment Site RAG (Red, Amber, Green) Status



- Assessment site
- Assessment site RAG status
- Red
- Amber
- Green

Corresponding LUC ID and Council ID





19: AS809	48: LPR26
30: LPR36	57: LPR44
35: LPR16	58: AS1015
47: AS134	

Map Scale @A3: 1:20,000



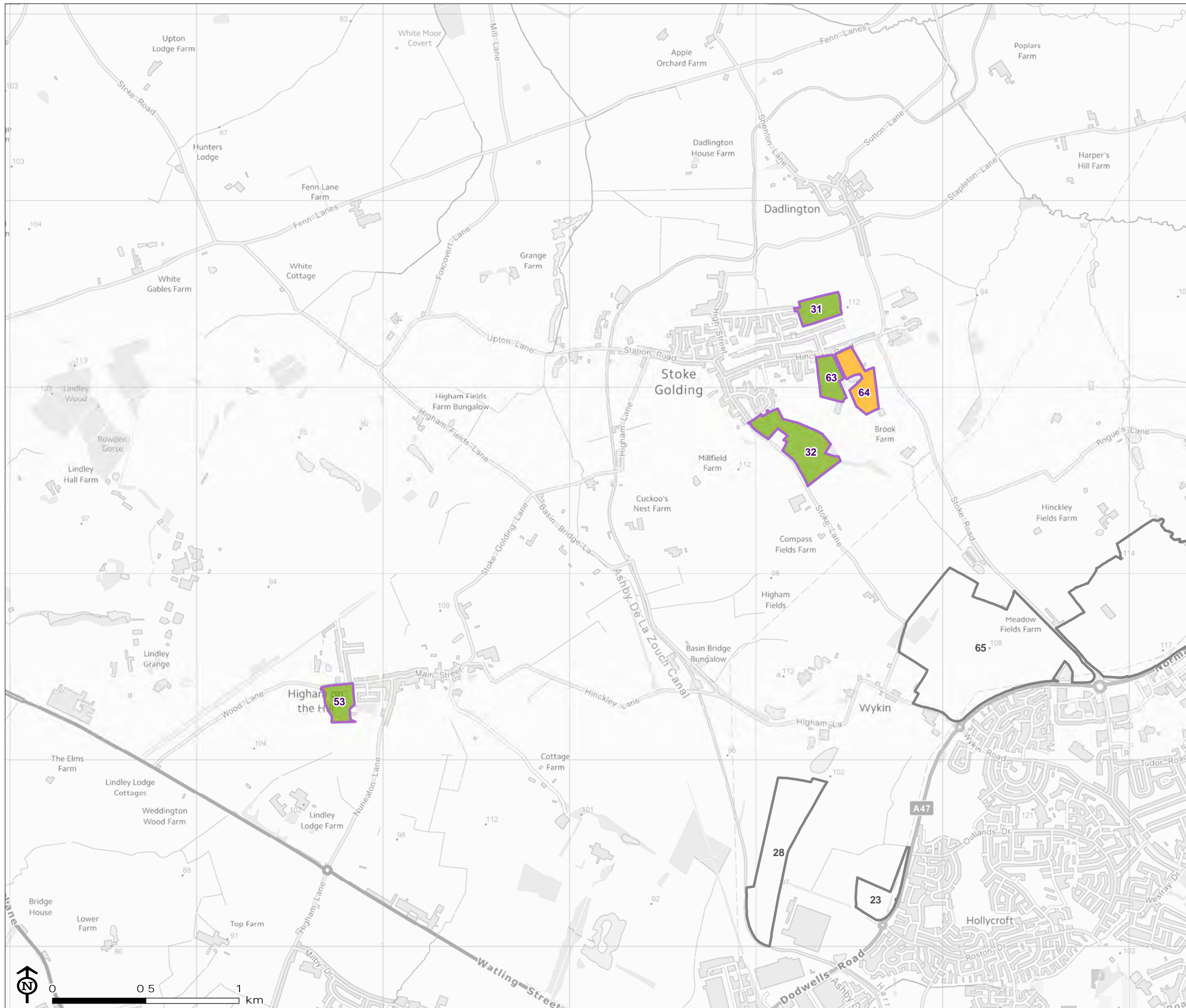
Hinckley & Bosworth
Phase 1 Habitat survey

Figure 7.04: Stoke Golding and Higham on the Hill Assessment Site RAG (Red, Amber, Green) Status

-  Assessment site
- Assessment site RAG status
-  Red
-  Amber
-  Green

Corresponding LUC ID and Council ID

- 31: LPR39 63: As540
- 32: LPR41 64: As541
- 53: LPR90



Map Scale @A3: 1:20,000

