



Blaby & Hinckley & Bosworth
Community Safety
Partnership



Strategy 2026-29

Introduction

The Blaby and Hinckley and Bosworth Community Safety Partnership (CSP) brings together organisations and individuals who are committed to reducing crime and disorder, protecting people from harm, and working closely with local communities to create a safer place for everyone. By combining our shared expertise and resources, we aim to make a meaningful and lasting impact on community safety across our area.

The partnership is accountable to the Home Office and is made up of a set of statutory “responsible authorities” as defined in the Crime and Disorder Act 1998. To support this, a structured governance framework is in place to provide clear direction and ensure progress toward agreed priorities and targets.

Our Purpose

Keeping people and communities safe is central to the shared purpose of our CSP. We work collaboratively to ensure that residents and neighbourhoods across Blaby district and the borough of Hinckley and Bosworth are protected, supported, and able to thrive in safe environments.



Our Community Safety Partnership (CSP) partners:

Our statutory partners are:

- Hinckley & Bosworth Borough Council
- Blaby District Council
- Leicestershire County Council
- Leicestershire Police
- Leicestershire Fire and Rescue Service
- Leicester, Leicestershire and Rutland Police and Crime Commissioner
- Probation
- Leicester, Leicestershire and Rutland Integrated Care Board

The Violence Reduction Network for Leicester, Leicestershire and Rutland are a key partner in our approach to reducing and preventing serious violence.

Success in keeping people and communities safe across Blaby and Hinckley and Bosworth requires support from many other organisations and groups, some examples are:

- Voluntary sector organisations
- Community-based associations and groups
- Businesses
- Town and parish councils
- Education providers
- Communities and residents



Key Pieces of Legislation that Shape what we do:

Crime and Disorder Act 1998

This law created Community Safety Partnerships. It requires local agencies to work together to reduce crime, anti-social behaviour, substance misuse and reoffending.

Police, Crime, Sentencing and Courts Act 2022 – Serious Violence Duty

This duty requires partners to share information, understand local risks and work together to prevent serious violence using a public-health approach.

Domestic Abuse Act 2021

Partners must provide safe, coordinated support for victim-survivors, and strengthen local responses to domestic abuse.

Counter-Terrorism and Security Act 2015 – Prevent Duty

Local services must work to help stop people being drawn into terrorism by identifying risks early and offering appropriate support.

Children Act, 1989, 2004, Care Act 2014 and Children’s Act 1989

These laws set out our responsibilities to safeguard children and adults at risk of harm, including where crime, exploitation or abuse are involved.

Anti-Social Behaviour, Crime and Policing Act 2014

This gives councils and police powers to tackle anti-social behaviour, such as Community Protection Notices and Public Spaces Protection Orders.



How the CSP identifies its priorities

Our approach ensures our priorities are **evidence-led, community-informed and focused on the issues causing the most harm** in our communities.

Strategic Assessment:

Priorities are identified through our annual strategic assessment process, using multi-agency data to understand trends, hotspots and emerging risks.

Community Consultation:

The views of communities are gathered via our annual community safety perception surveys. Results from both our adult and young people surveys are used to inform priority setting.

Multi-Agency Workshop and Professional Insight:

Partners, including statutory partners alongside non-statutory partners such as businesses and the voluntary community sector, take part in a priority-setting workshop to review the evidence and agree priorities.

Alignment with Statutory Duties and National/Regional Strategies:

Our priorities reflect statutory duties including the Serious Violence Duty, Prevent Duty and Domestic Abuse Act. We consider the alignment of our priorities with the Leicester, Leicestershire and Rutland Police and Crime Plan. National strategies are also considered when setting our local priorities.



Priority 1:

Protecting and supporting people

Key areas of focus:

- Support victims, witnesses and perpetrators, and continue to work to increase reporting of domestic abuse and hate crime and improve outcomes for those affected.
- Implement early interventions to protect people and communities from harm.
- Engage with young people in educational and community settings to equip them with the skills and understanding required to make informed choices and protect themselves from harm.
- Work to address and increase understanding of all forms of exploitation including child sexual exploitation, child criminal exploitation and modern-day slavery
- Equip residents with clear, practical information that empowers them to recognise, avoid and report scams and online crime.
- Work proactively with key partners, community leaders and communities to build stronger, more cohesive, and resilient communities.
- Work together to tackle cross cutting themes such as substance misuse and mental health



Priority 2:

Reducing offending and re-offending

- Proactively work to reduce anti-social behaviour by implementing coordinated, early and sustained intervention measures.
- Deliver co-ordinated, multi-agency efforts to reduce reoffending, focusing on prevention, early intervention and long-term behavioural change.
- Deliver comprehensive anti-social behaviour prevention and awareness programmes for young people, ensuring they are equipped with the knowledge, skills and support needed to make positive choices and contribute to safer, more resilient communities.
- Work proactively to prevent, identify, and tackle rural crime by strengthening intelligence sharing, collaborating with farmers, landowners and rural community groups to build strong relationships and improve community resilience.
- Actively promote crime prevention across our communities by providing clear information, practical advice, and accessible support that empowers residents to recognise risks, take preventative action and contribute to safer neighbourhoods.
- Deliver a comprehensive programme of campaigns, awareness raising events and targeted training designed to reduce seasonal crime, increase community awareness, and ensure residents understand how to report incidents and access the support and services available to them.
- Work proactively to reduce domestic burglary and vehicle crime offences by delivering targeted prevention initiatives, improving intelligence-sharing with partners, and equipping residents with the knowledge and tools needed to better protect their homes, vehicles and personal property.
- Increase trust in local reporting pathways and improve perceptions of safety, with a particular focus on empowering young people to speak up and seek support when needed.
- Take co-ordinated and proactive action to disrupt county lines, working closely with partners to safeguard those at risk and provide comprehensive support to victims.
- Work collaboratively with partners to detect and respond to emerging crime and disorder trends, using shared intelligence, preventative activity, and targeted operational resources to reduce harm, protect vulnerable individuals and maintain community confidence.
- Work with businesses and partners to reduce shoplifting and increase detection of business crime.

Priority 3:

Preventing and reducing serious violence:

- Fulfil our statutory responsibilities under the Serious Violence Duty by embedding a coordinated, evidence-led approach that enables partners to identify, prevent and respond effectively to the causes and impacts of serious violence across our communities.
- Ensure that young people and the wider community play an active role in shaping our serious violence strategy and plans by embedding meaningful engagement, consultation and feedback mechanisms throughout the process.
- Further strengthen our partnerships with education providers and work collaboratively to prevent, reduce and respond effectively to serious violence through co-ordinated, evidence-based approaches.
- Continue to expand our understanding of trauma and enhance trauma-informed practice through on-going learning, and collaboration with specialist partners, enabling us to better identify needs, reduce harm and provide effective support.
- Deliver comprehensive prevention and awareness programmes in schools and other youth settings, whilst also commissioning specialist outreach, sports initiatives and mentoring opportunities that support young people's development, reduce risk and promote positive pathways.
- Deliver targeted work to reduce serious violence in identified hotspot locations during peak times, ensuring resources are deployed where they can have the greatest impact.
- Provide therapeutic support for young people affected by domestic abuse and deliver dedicated adult domestic abuse outreach services to ensure victim-survivors receive timely, accessible and specialist help.
- Support campaigns and initiatives that aim to reduce violence, while working collaboratively with partners to identify individuals at risk and ensure they receive effective support and intervention.
- Continue to work with partners to tackle violence within the night-time economy, strengthening joint approaches and deepening relationships with businesses and night-time economy providers to improve safety and reduce harm.
- Work in partnership to increase understanding of and tackle the impacts of online harms for young people.



Across all our priorities, we will continue to:

- Ensure communities inform and shape our work
- Use data led and evidence-based approaches in our strategic and operational work
- Recognise the importance of prevention and take a public health approach to our work
- Give clear messages about the services that are available, how to access them and how people can report in
- Celebrate successes of our work and communicate successes to communities
- Work to continually improve how we communicate and engage with people and communities
- Build on existing good partnership relationships
- Work effectively with the Voluntary and Community Sector (VCS)



Monitoring, Evaluation & Learning

The CSP is committed to continuous learning and improvement, and to understanding the impact of our work and the difference it is making.



Performance Monitoring

As a partnership we will self-monitor and collectively evaluate the impact and effectiveness of this Strategy and our commissioned services through our CSP Executive Board. The CSP reports success and progress against this Strategy and the supporting delivery plans to the CSP Executive Board on a quarterly basis. Local trends in crime and disorder are monitored by the CSP with quarterly reports provided to the CSP Executive Board.



Insights and Feedback

We will continue to embed opportunities for communities to share their insights and to shape priorities, services and interventions. As a partnership we will strengthen our community involvement work through the adoption of the Community Partnership Framework.



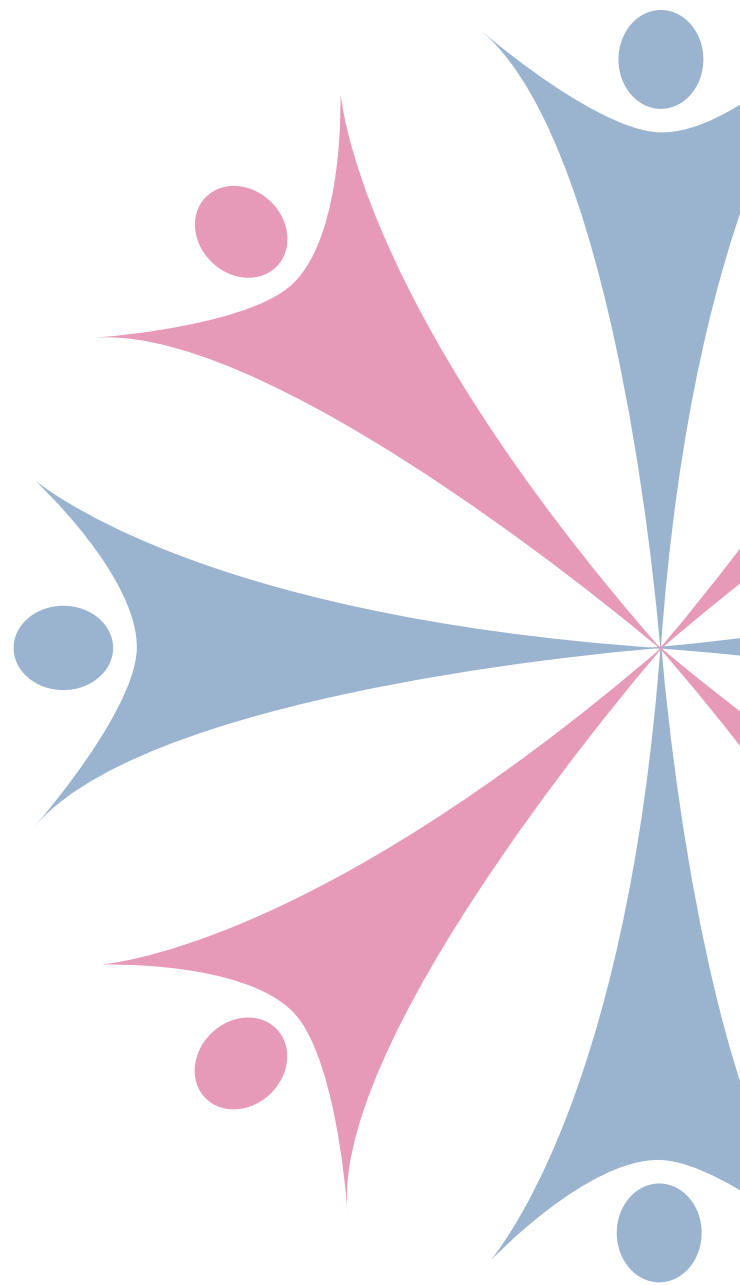
Scrutiny

The CSP has a dedicated Scrutiny function via the Joint Community Safety Partnership Overview and Scrutiny Committee. We provide annual updates to this Overview and Scrutiny Committee.



Evaluation

We will look to evaluate new and existing interventions, assessing how they're being delivered and what's working well or needs improving.



You can find information about our work at:

LEICESTERSHIRE
FIRE and RESCUE SERVICE



Hinckley & Bosworth
Borough Council